



RNR 397A

Sustaining Local Food, Biodiversity,
and Livestock Grazing in the Alps

University of Arizona - Study Abroad Course



Where are we going?



Susa Valley, NW Italian Alps

The Alps



To Italy!

The Alps

1,200 km

We'll go here!

Switzerland

Germany

Austria

Liechtenstein

Slovenia

France

Aoste

Milan

Venice

Turin

Italy

Monaco

The highest and most extensive mountain range in Europe



What will we see there?

2 ITALIAN REGIONS

8 alpine valleys, 13 locations



COSTS include:
all food, all lodges,
and all ground
transportations!



**MONTE BIANCO,
the highest peak of the Alps**



Aosta Valley, NW Italian Alps



REGIONE
PIEMONTE



Alpi Cozie
Natural Parks

Ente di gestione delle aree protette
delle Alpi Cozie



PARCO NAZIONALE GRAN PARADISO

Gran Paradiso
National Park

Stefano Duglio



2 NATURAL PARKS and..

Susa Valley, NW Italian Alps

Soana Valley, NW Italian Alps

..many RANGERS, SPECIALISTS, and GUIDES working in their PARKS



Susa Valley, NW Italian Alps

PROFESSORS, SPECIALISTS, and STUDENTS from the UNIVERSITY of TURIN and...



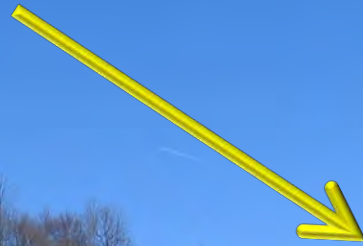
Susa Valley, NW Italian Alps

...the “INSTITUT AGRICOLE” of
AOSTA VALLEY ..which will also host us!



Many AMAZING PLACES
that are part of the Italian history...

We'll spend one
night here!!



Certosa di Montebenedetto, Susa Valley, NW Italian Alps

...many beautiful GRASSLANDS
and RARE SPECIES, and..

Susa Valley, NW Italian Alps

..many *cute* ANIMALS!



Susa Valley, NW Italian Alps



Many FARMERS working with their LIVESTOCK and..



many CHEESE-MAKING operations...





Lisa Bush



...including many
CHEESE (+ ice-cream) TASTINGS and...





...a visit to a MUSEUM dedicated to the FONTINA, a typical Aosta Valley cheese!

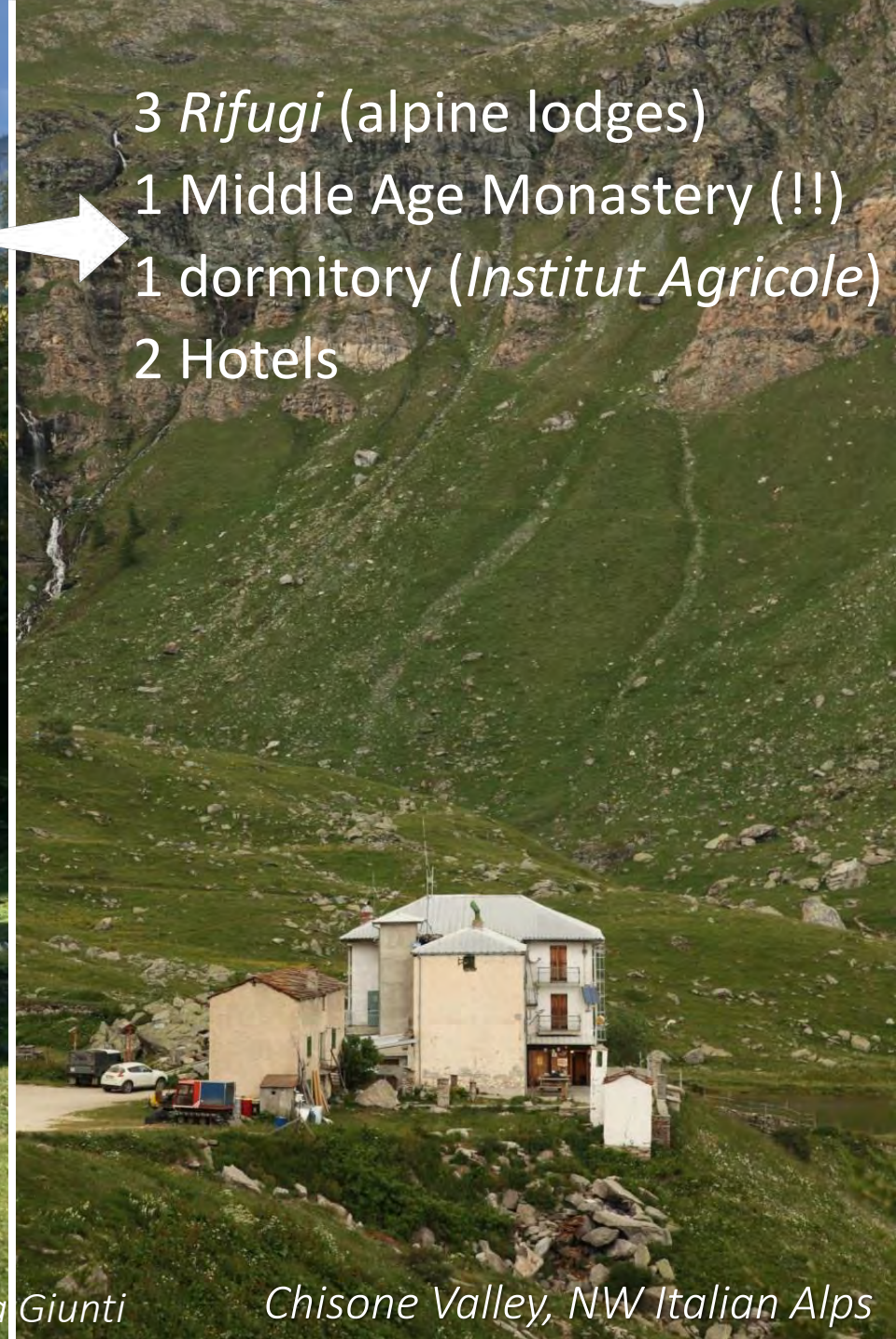


Where will we stay at night?



7 different
accommodations
in the heart of the Alps

- 3 *Rifugi* (alpine lodges)
- 1 Middle Age Monastery (!!)
- 1 dormitory (*Institut Agricole*)
- 2 Hotels



Susa Valley, NW Italian Alps

Luca Giunti

Chisone Valley, NW Italian Alps

How will we get to these places?



Monte Bianco! 

*Ok, not really
this way, but..*

 **Hiking!** 



Hiking!



.. we'll have to HIKE with our BACKPACKS
to some of the *RIFUGI*
as well as during the FIELD TRIPS

What will we eat???





Of course, every day some amazing
ITALIAN FOOD!



..and *TONS* of grass-fed Italian CHEESES!

Azienda Agricola AGU'

FORMAGGERIA

PRODUZIONE E VENDITA FORMAGGI

Via del Castello 19
VILLAR PEROSA
tel. 0121 514352

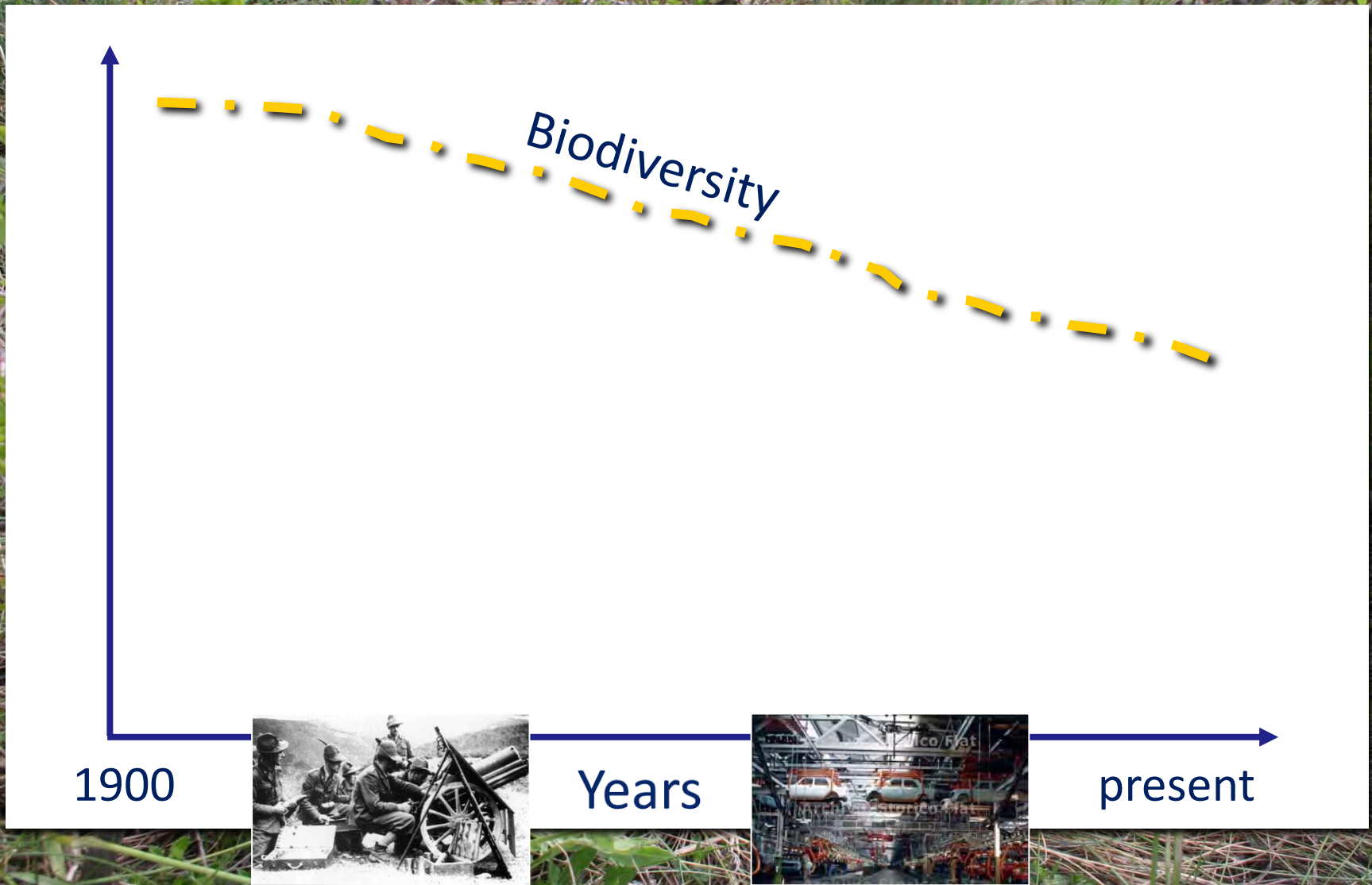
SELLERIES - ROURE
tel. 329 2184128



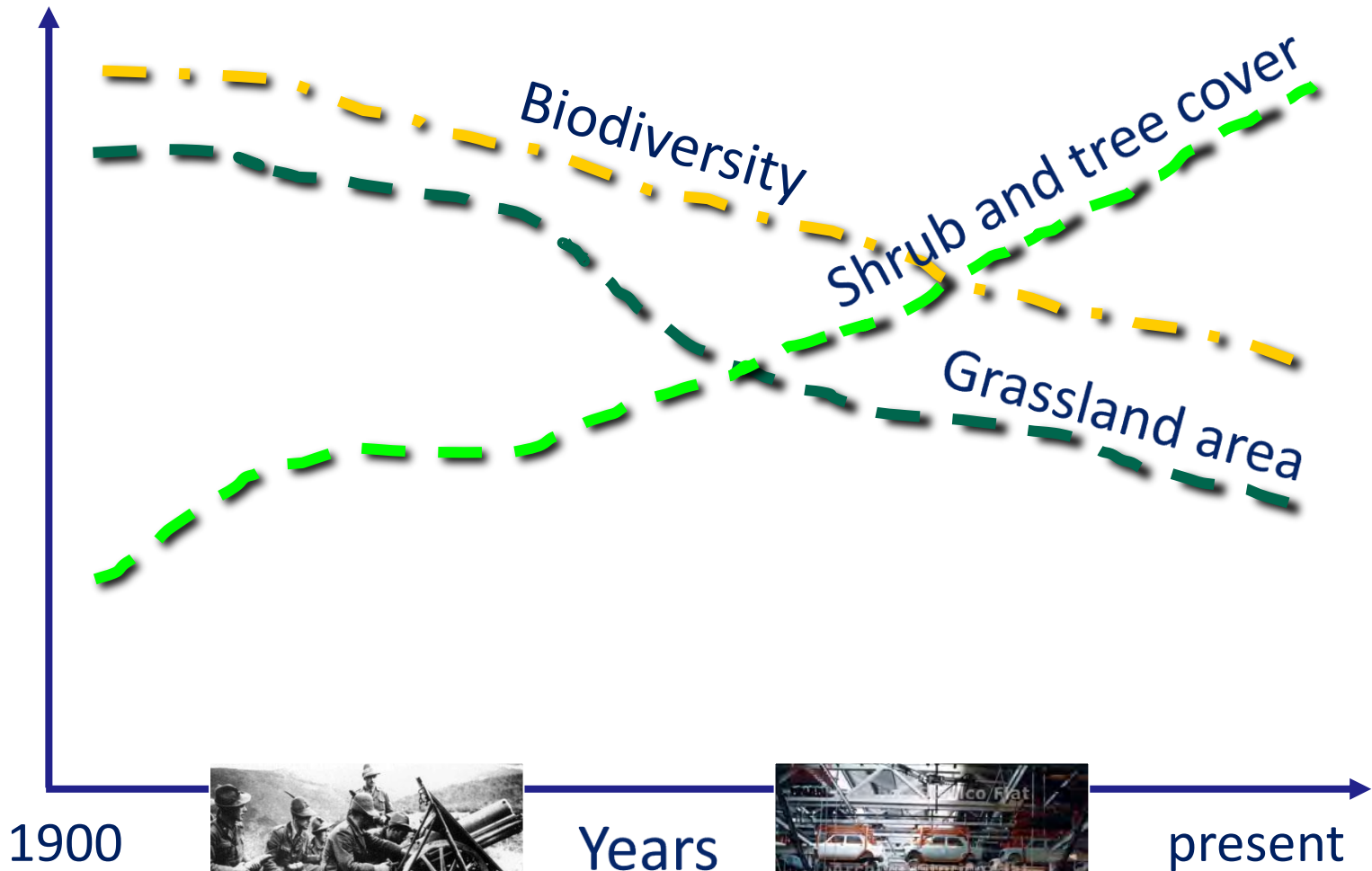
Why are we going there?



To understand the factors driving the LOSS of BIODIVERSITY ongoing in the Alps...



..such as the DECREASE in GRASSLAND AREA due to the INCREASE in SHRUB and TREE COVER..



1900



Years



present

1939

Luca Giunti



Susa Valley, NW Italian Alps

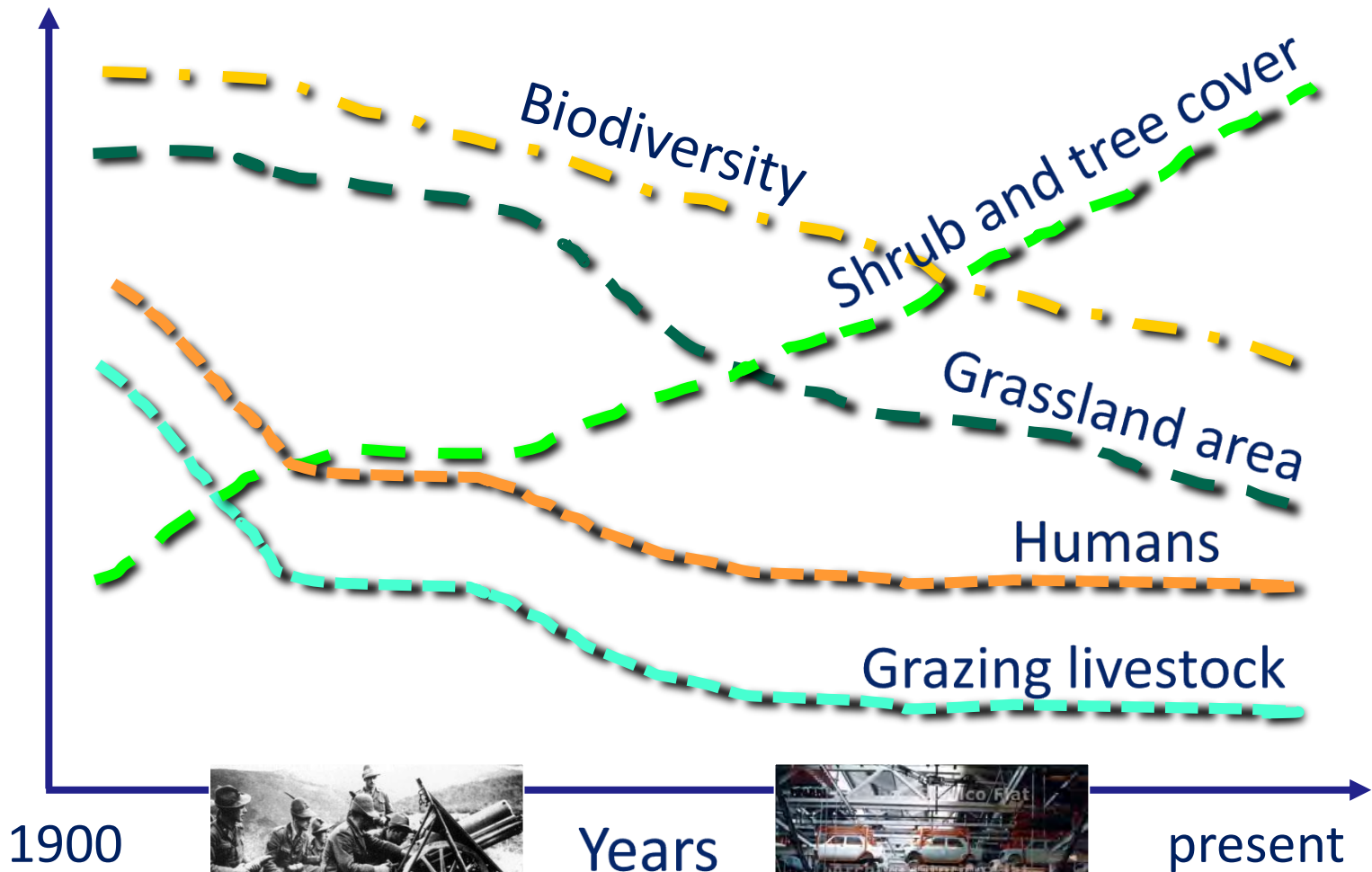
2016

Luca Giunti

Susa Valley, NW Italian Alps

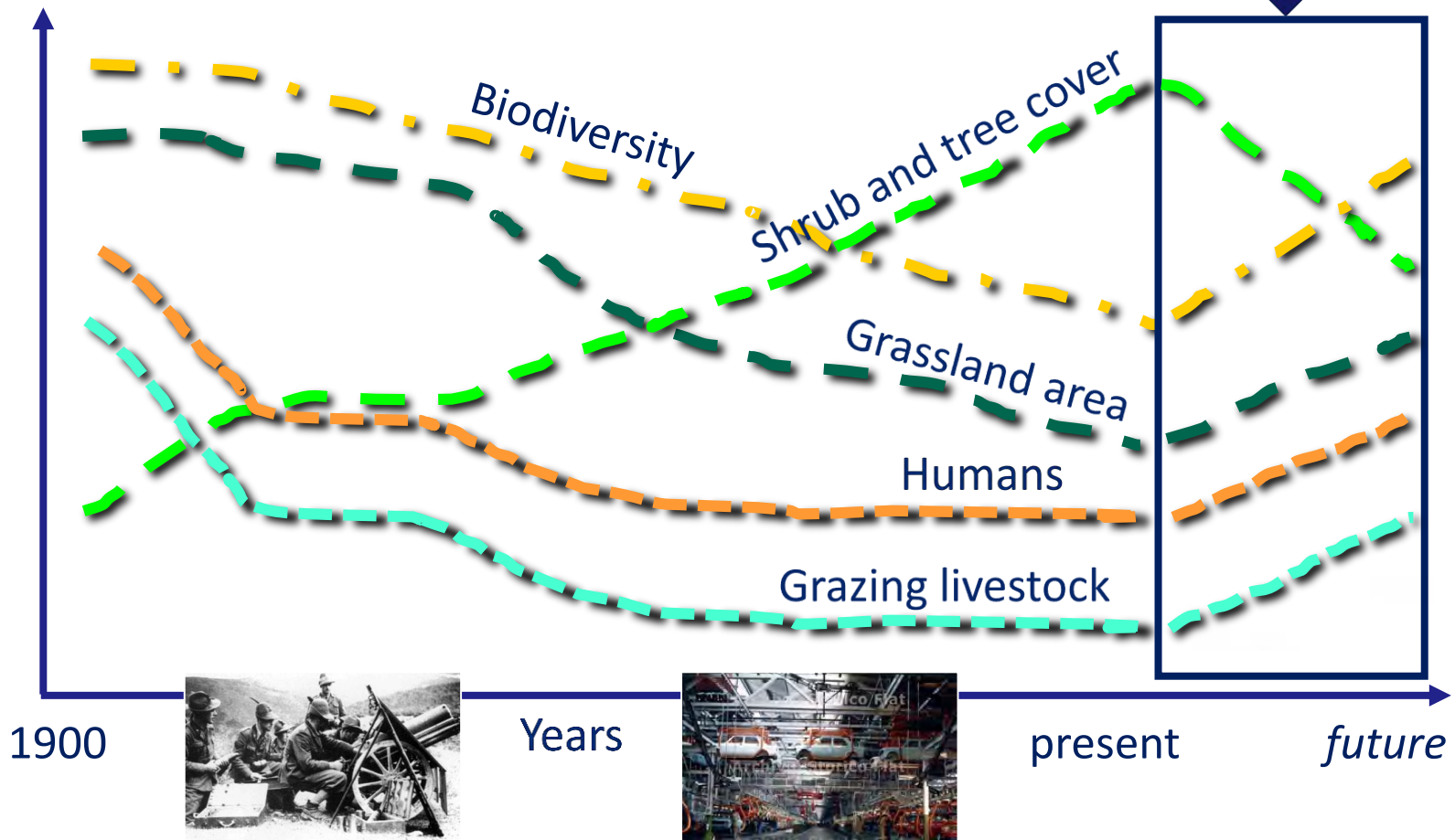


..due to the DECREASE in GRAZING LIVESTOCK following the DEPOPULATION of alpine regions

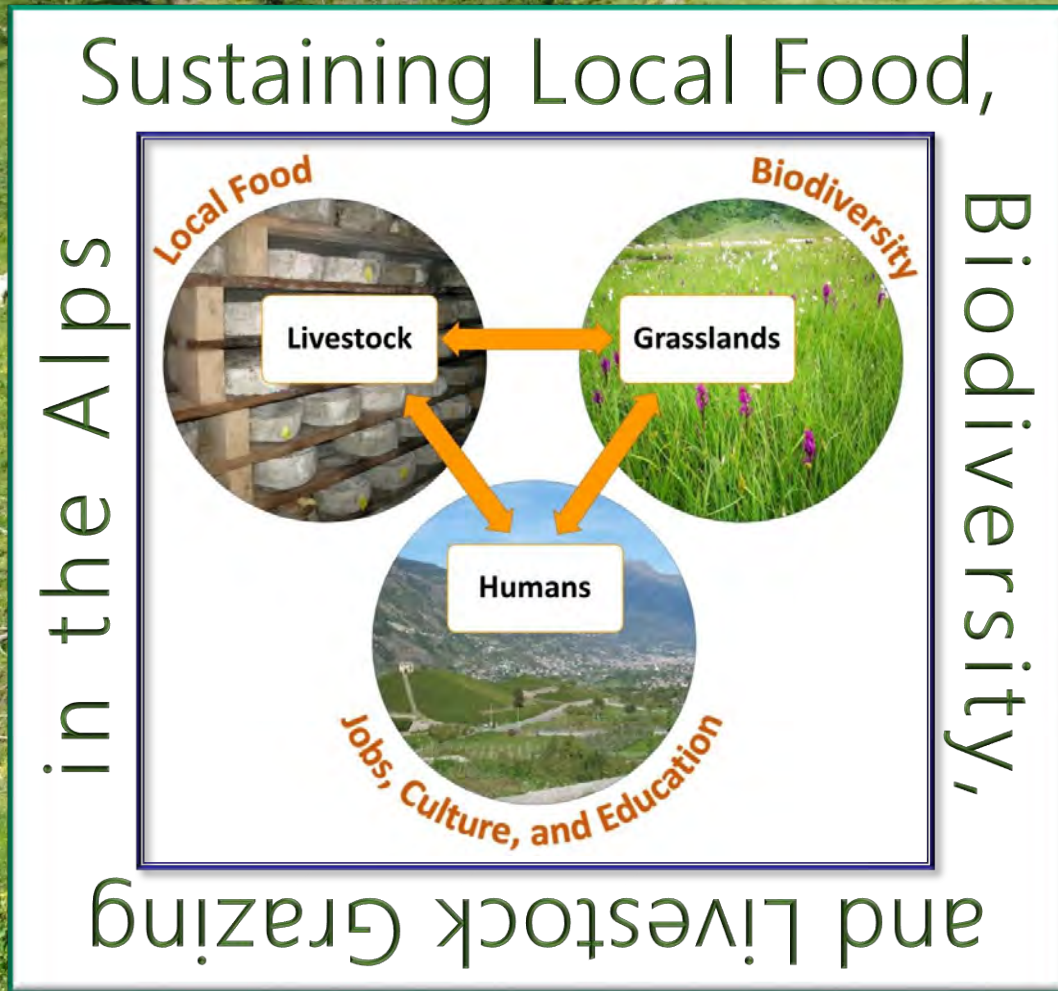


But what about the future?

The objective is to reverse these trends..



..and this course will show you
HOW this is happening!





Humans

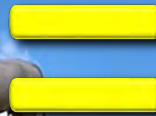


Grasslands



INPUTS

Livestock



Biodiversity



Job, Culture,
and Education



OUTPUTS

Local Food



Livestock



Local Food



Lisa Bush

INPUT

OUTPUT

Grasslands

Biodiversity



INPUT

OUTPUT

Humans

Job, Culture,
and Education



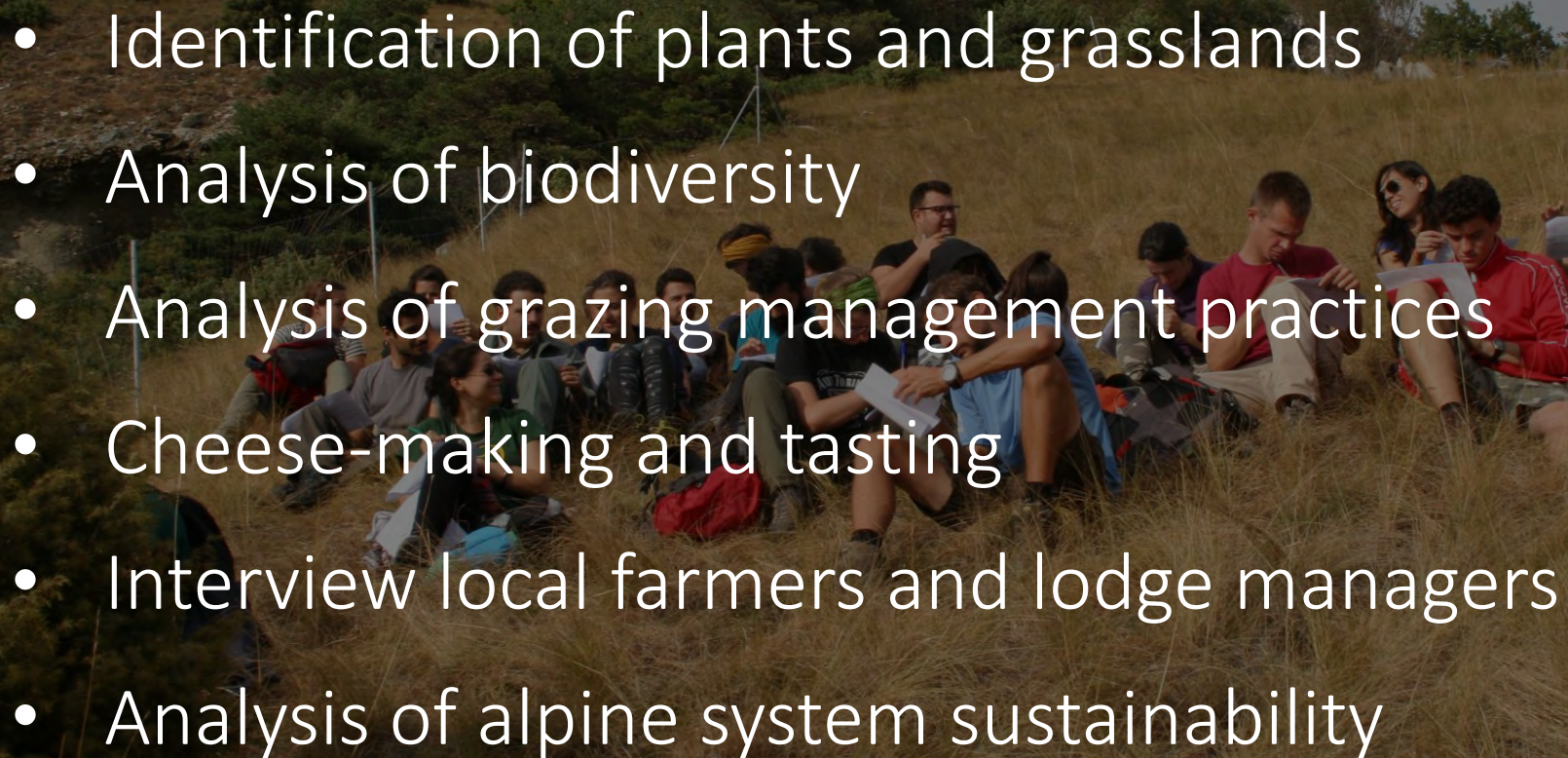
INPUT

OUTPUT

*How will we learn
all that?*



Through VISITS, LECTURES, and PRACTICAL ACTIVITIES in the FIELD

- Identification of plants and grasslands
 - Analysis of biodiversity
 - Analysis of grazing management practices
 - Cheese-making and tasting
 - Interview local farmers and lodge managers
 - Analysis of alpine system sustainability
- 
- A group of approximately 15 students are sitting on a grassy slope, engaged in fieldwork. They are looking at papers, some are writing, and some are talking. The background shows a rocky hillside with sparse vegetation under a clear sky.



How will you be different after this course?



Instructor and Contact Information

School of Natural Resources and the Environment

University of Arizona, Tucson, AZ

Instructor

Dr. Mitchel McClaran, Professor

Email: mcclaran@email.arizona.edu

520-390-9801 (c), 520-621-1673 (o)

<http://snre.arizona.edu/people/mitch-mcclaran>

Office Location: 112 Biological Sciences East



Assistant Instructor

Dr. Alessandra Gorlier, Research Specialist Senior

Email: agorlier@email.arizona.edu

520-392-0327 (c)

Office Location: 310 Biological Sciences East





If you want to fall in love with the Alps,
take this Study Abroad class next summer!

<https://global.arizona.edu/study-abroad/program/sustaining-local-food-biodiversity-and-livestock-grazing-alps>

