



KALU YALA
INTERNSHIPS

“[Kalu Yala is] a sustainable jungle frontier settlement for entrepreneurs and modern day tropical cowboys.”

**--Jimmy Stice,
CEO and Visionary**

"In San Miguel, we were welcomed like celebrities. Through Kalu Yala's Community Outreach program in this tiny town, the people of this region have come to love the members of the Kalu Yala team, the work being done in San Miguel and the work yet to be done in Kalu Yala."

**-- Catherine Powell,
Mother of past Intern**

"Seven days ago, thirteen Kalu Yala interns, three directors, a cook and a dog, arrived at BaseCamp; a field full of cow patties and shrubs surrounded by hills of thick jungle. After sweating, swimming, building, rebuilding, exploring, and engaging this past week we have established a close-knit community sewn together with unbreakable bonds."

**-- Brie Trimm,
Summer 2011 Outdoor Recreation Intern**

Table of Contents

Introduction	4
Internship Programs	5
Internship Models	8
Your Home at Kalu Yala	9
The Panama Experience	11
Fall 2013 Dates and Tuition	12
F.A.Q.	13
Application Instructions	14
Optional Spanish Courses at your venue	15

Introduction

Kalu Yala (KY) is in the early stages of developing a 550-acre river valley property, located within the picturesque scenery of the Panamanian highlands. The project aims to develop a sustainable town, hence, our dream encompasses implementing the efforts of an outstanding group of professionals and individuals who believe in sustainable practices and lifestyles.

Kalu Yala Internships, S.A. is an unpaid, full-time internship program that hosts students and young professionals from around the world to Panama to engage in the creation of the Kalu Yala culture. Here, interns have the opportunity to openly express and implement their ideas in a work environment like none other. In this unique opportunity, you can set your own course of work and have the chance to make a dramatic impact over the three-month internship.

Kalu Yala Internships, S.A. operates from three locations, each offering an individual environment and personal experience. The first is located in Bella Vista, a neighborhood in the heart of Panama City, and serves as Kalu Yala's headquarters and home to the Business Program. The second is in San Miguel, the rural town closest to Kalu Yala in the San Martin County of Panama and is home to the Community Outreach and Education Program. The third is the actual Kalu Yala property. This remote and captivating environment is home to the Agriculture/ Ag Science, Biology, and Outdoor Recreation Programs.

Your program will determine your home away from home, which is where you will spend the majority of your days.

Interns have the option to choose between two internship models. An intrapreneurship model grants you an active role in your Program Director's quarterly project; an entrepreneurship model guides you in creating your own unique project proposal and bringing it to fruition. Both types demand passion, strong work ethic, and tons of initiative. Program Directors are young professionals who started as interns and found a home in Kalu Yala to develop and nurture their ideals.

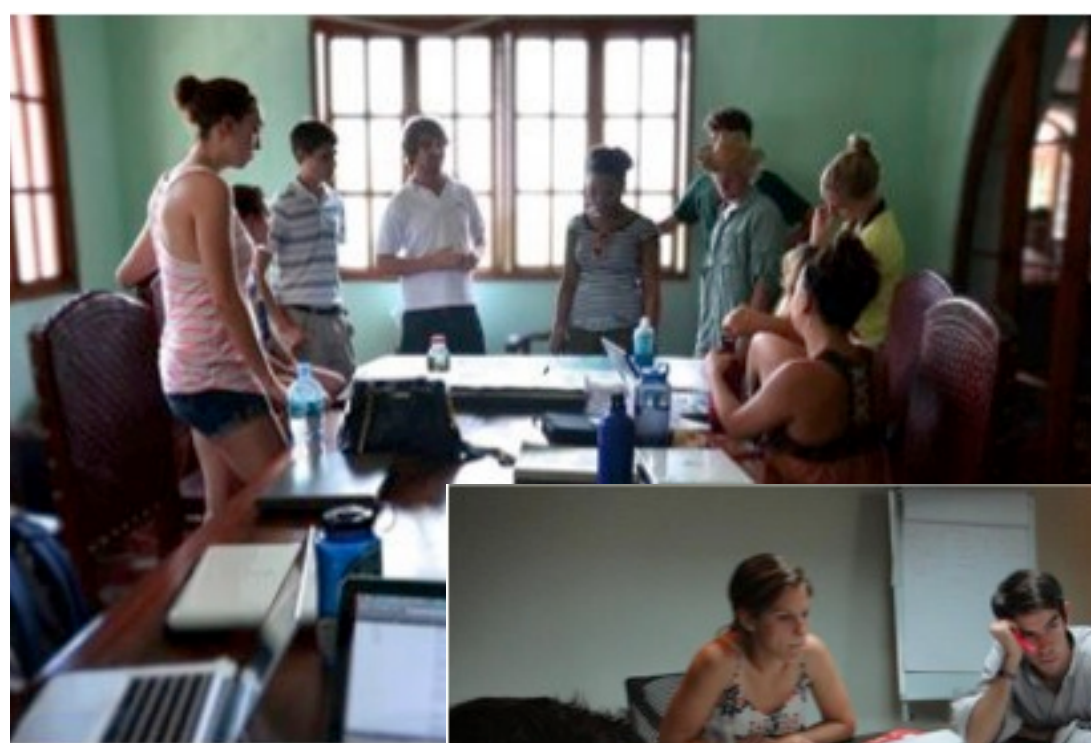
Upon arrival, prepare to meet a group of peers where no one knows each other and everyone is eager to learn while getting his or her hands dirty!

Internship Programs

Based in Panama City

Business Development and Entrepreneurship Program

Based in Panama City, the Business Program is designed to help interns accelerate entrepreneurial skills and shape Kalu Yala's development model to form the foundation for a groundbreaking new town. The Business Program challenges interns to think outside the box and match all business practices with Kalu Yala's paramount principle: sustainability. The program encourages participants to redesign traditional business models by giving them access to field mentors and hands-on experience. Interns will have the opportunity to work with our most recent up-and-coming business developments including Jungle Adventures by Kalu Yala, which opens Kalu Yala to the public through an array of eco-tourism adventures and was first established by the Fall 2012 Business Interns. (They made a business proposal, ran two trial runs with guests, and presented to potential investors- all in 3 months!)



Based in San Miguel

Community Outreach and Education Program

The Community Outreach Program's mission is to work with the local people from the rural towns surrounding Kalu Yala. The team aims to develop and strengthen community and business institutions that can support the sustainable development of the region alongside the growth of Kalu Yala. These interns can create new projects or collaborate with ongoing projects. In the past interns have created the after-school youth soccer program, hosted a bi-annual Pacora River Community Clean-up, did an intensive study of rural women's healthcare, taken the first San Miguel town census, and helped build a home for a family in need.

Our Education-focused interns play a vital role in bringing educational initiatives to the community. Interns have participated in a multi-year ESL program for all age levels, created after-school science events, and hosted seminars on dental hygiene and breast cancer awareness. Current projects include assessing local labor culture, developing relationships with nearby universities, and implementing a series of relevant workshops featuring outside expertise.

Speaking English is held in high regard in Panama, as people who are bilingual make about 30% more than those who do not. Prior to Kalu Yala's presence, the people of San Miguel did not have local resources to teach this valued skill and they have welcomed us into their community.



Based in Kalu Yala

Agriculture and Animal Science Program

This program strives to integrate organic farming, farm animals, and the responsibility of preserving the natural beauty of the land in the process of building a sustainable town. Interns will set down a foundation of tropical cultivation that will allow Kalu Yala's sustainable agricultural system to flourish. This program aims to copy systems found in nature that promote ecologically responsible land use. The program will produce crops using permaculture and sustainable farming techniques. We have begun incorporating chickens, but hope to soon add horses, cattle and goats into Kalu Yala as we begin the journey of starting an organic farm. Additionally, this program seeks to design and build basic farming infrastructure such as chicken coops and loafing sheds to provide shade and shelter from the rain.



Biology Program

The Biology Program focuses on conducting biological field research, such as the cataloging of flora and fauna in and around Kalu Yala. The ultimate goal is to have a self-sufficient, sustainable system for Kalu Yala and surrounding community integrating effective, sustainable practices without disturbing the existing ecosystems. Projects have ranged from GIS mapping, to building the first gravity-fed water system in Kalu Yala, as well as many flora and fauna field studies.



Outdoor Recreation Program

The Outdoor Recreation Program's objective is to provide the residents and visitors of Kalu Yala with high-quality recreation opportunities that promote health, education and culture by preserving Kalu Yala's extraordinary biological diversity. Interns study different land management practices and will set the standard for approaches used for tourism in Kalu Yala. Interns will also be responsible for raising visitor awareness of environmental sustainability by providing an understanding of cultural and natural surroundings in relation to the Kalu Yala community through the different activities it has to offer. In particular, the Outdoor Recreation team will be working closely with Kalu Yala Jungle Adventures, helping lead guests with activities like hiking, river rock jumping and of course, "valleyball" (that's jungle speak for volleyball!).

Intern projects include sustainable development of trail management, rivers, parks/campgrounds, sports venues, rock climbing routes, and other recreation outlets as well as many feasibility studies of the possibilities. The Outdoor Recreation Program works to create opportunities for all ability levels, and is shaping the way Kalu Yalans will enjoy the outdoors for years to come.



Internship Models

Kalu Yala Internships's interns get to experience a foreign country, interact with like-minded coworkers, and reinforce personal strengths. All interns will develop and enhance professional skills, which will culminate in Final Presentations the last week of the semester.

The internship concept is centered on independent project-studies, which are selected with the assistance of a Program Director during the first two weeks of the program. Once completing Orientation week in Panama, every intern has the option to choose between two models:

Intrapreneurship Model

Interns can choose to assist in preselected projects managed by their Program Director. Collaborating with Directors on a program's principle project fosters mutual respect and a good rapport between interns and Program Directors.

Interns might be required to employ a task force approach in order to produce a comprehensive product. An intrapreneur intern is able to implement and hone organizational skills such as project and team management. This opportunity provides direct attention and guidance, in addition to Directors' personal know-how.

- Independent project studies allow interns to set their own course of work and develop entrepreneurial skills.
- *Intrapreneurship Model*: Contribute to a pre-determined project; receive direct attention and guidance from Directors; develop professional and interpersonal skills.
- *Entrepreneurship Model*: Develop and execute a personal project; limited supervision and guidance from Program Directors; hone research and entrepreneurial skills.

Entrepreneurship Model

This internship option provides the opportunity to enjoy the Kalu Yala experience through an independent and investigative approach in which individuals develop personal projects. Program Directors and entrepreneurial interns collaborate during brainstorming sessions for project formulation and systematic implementation plans.

The entrepreneurship model entails the application of professional research, e.g., desk and field research, and the creation of official documents like feasibility reports and business plans. This is an experience in which individuals can capitalize on personal talents such as creativity and time management, among other salient skills for a successful self-starter.

All interns will be required to learn WordPress blog publishing skills and will document their internship weekly on our blog that averages 7,000 unique visitors per month.

Your Home at Kalu Yala

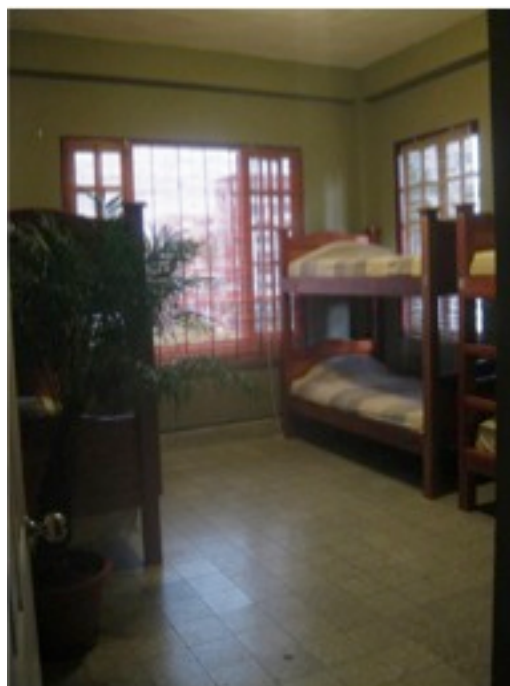
The venue where you will live is driven by your chosen topic of focus and the location of the resources needed to complete your project. You will have the ability to visit all three locations, but will spend the majority of your time in the location where your program is based, unless your project requires special circumstances.

Casa Yala, Panama City

Casa Yala is the location of our main office. Though all interns will have access to Casa Yala resources, residing at Casa Yala will be limited to Business Development interns. It is located on the same street as Hostel Urraca, where beds are \$14/night.

The building is located in the Bella Vista neighborhood, directly behind Urraca Park in the center of Panama City. We are located in the penthouse apartments, having 7 bedrooms, 4 bathrooms, two kitchens, 3 living rooms, dining room, breakfast nook, boardroom, hammock front porch, washer/dryer, and housekeeping services. The building has a gated entry and a gated parking garage. We also have an open-air porch with the beginnings of an urban garden.

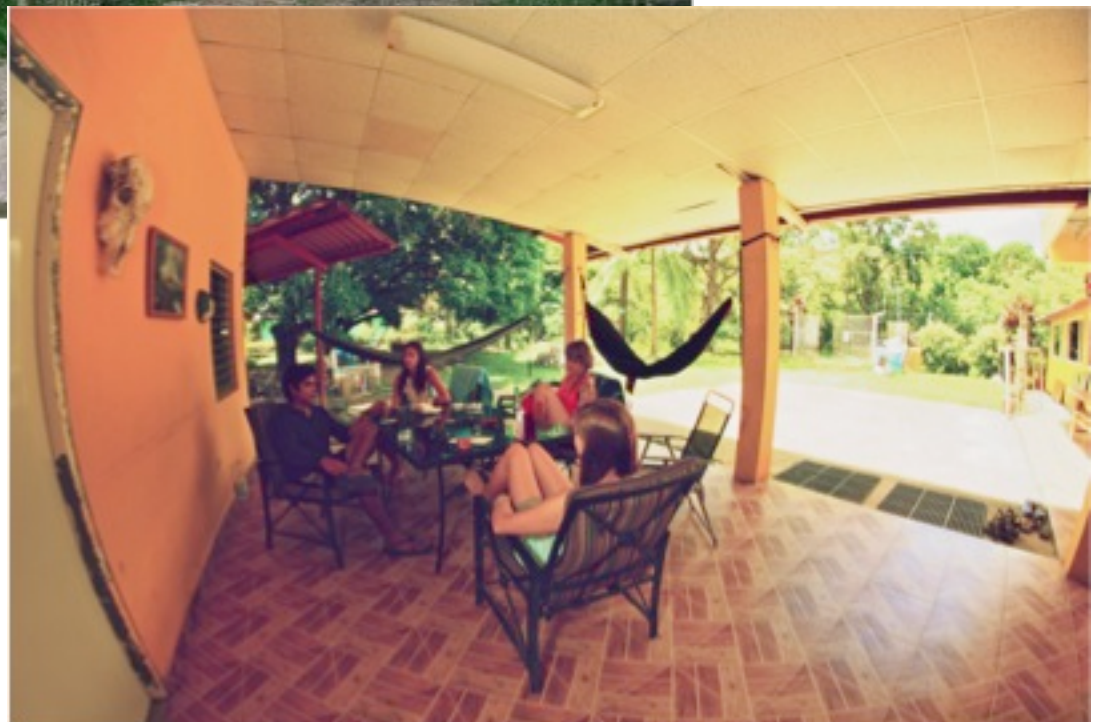
- *Casa Yala:* Located in Panama City's center with access to the conveniences of an international city.
- *Casa Llena:* Located in the rural town of San Miguel. Town center, riverfront, mountain trails, and Kalu Yala all within walking distance. Limited Cell phone and Internet service.
- *Kalu Yala:* Remote and pristine, Kalu Yala is a forty-minute hike from San Miguel. Access limited to 4x4 vehicles.



Casa Llena, San Miguel

Casa Llena is home to the Community Outreach and Education interns. It has five bedrooms, three bathrooms, a kitchen, dining area, living room, and game room.

In a small town like San Miguel, there are small restaurants (“fondas”), bars, a first-aid health center, and two convenience stores. A forty-minute bus ride from San Miguel will get you to La Doña en Veinticuatro, the closest commercial center with a grocery store, internet cafe, and ATM service. The same bus takes passengers to Panama City, ultimately passing in front of Urraca Park, where there is a bus stop just one-hundred yards away from Casa Yala’s front door. This bus route terminates at the Albrook Station, Panama’s largest bus station. Albrook Station is also the most common source of transportation used by interns to explore the country during weekends.



Kalu Yala

In the summer of 2011, the Kalu Yala base camp was established on our 550-acre property. It is only accessible by four-wheel drive vehicles and foot. For the avid hiker, Kalu Yala is a tough one-and-a-half hour hike, starting from our house in San Miguel. Interns will spend at least 90% of their time living and working in Kalu Yala. If nature, the outdoors and adventure are what you are looking for, Kalu Yala will live up to your expectations. Interns who choose this location are required to learn jungle survival skills and minimal impact practices.

Here, interns spend their down time swimming in the Pacora and Iguana Rivers, exploring surrounding jungles, playing volleyball and cards, and socializing over home-cooked meals. As of January 2013, all existing structures were built by past interns and directors and include a thatched-roofed community area with a kitchen, five “rancho”s, two composting toilets, and a covered gazebo.

Construction is set to begin at Kalu Yala in August 2013 so interns living here will get a first-hand look at the building process.



Kalu Yala is currently completely off the grid.



The Panama Experience

There is more to the Kalu Yala experience than just work. Interns are encouraged to take advantage of all that Panama has to offer. Though a relatively small territory, Panama has a surprising variety of different destinations and environments. This gives our interns the option to form travel groups with other interns interested in the same destinations. You can read all about it from Steven Reed, a spring 2011 Kalu Yala alumni, who after successfully completing his project decided to enlarge his legacy. Steven created a travel guide for future Kalu Yala interns to learn from his experience and get the most out of the Kalu Yala Internship.

Here is an excerpt...

"So it's about two months into your semester as a Kalu Yala intern. You've seen all the sights in the city. Or maybe you are living in Kalu Yala. You've been up and down the trails in the rainforest countless times, and you know every nook and cranny of the Iguana River. And to all you future San Miguel interns, how many times can you eat at the Taberna del Rio? You just gotta get away for the weekend!"

Panama is one of the safest, if not the safest, countries in Latin America. The only areas that are recommended to stay away from are Colon and the coastal areas on the Caribbean side near the Darien. Pretty much everywhere else is fair game in Panama to travel to safely. Basically, just use common sense and you will be fine.

The buses (chivas) in Panama are cheap, reliable, safe, and always a cultural experience. Yet, if you have never used them before, the process can be a bit intimidating, especially given that you are in a foreign country and may or may not speak any Spanglish. Let me just say this: Don't be intimidated! Once you get over the initial fear of using the buses and try it that first time, you will be hooked..."

- Easily travel to destinations in Panama using Kalu Yala's detailed, intern-written travel guide.
- Surfing, SCUBA diving, fishing, mountain climbing, hiking, zip line tours, horseback riding, and island-hopping, to name a few!
- Access to the Pacific Ocean, Caribbean Sea, national parks and mountain ranges.

Vacation days

Vacation days vary depending on the semester for which you are applying. We take both Panamanian and major American holidays into account. All interns receive 5 floating holidays and visits by family do not count towards these.

Fall Semester 2013

The Kalu Yala Fall 2013 Semester starts **September 2nd** and runs through **November 15th**. Program tuition covers housing, work day Meal Plan, and project-related expenses. Due to residential capacity, a **\$500 deposit is required within 3 weeks of acceptance** in order to reserve a spot in the program.

Tuition

Early Admission- closes July 1 st	<u>\$3,495</u>
Rolling Admission – starts July 2 nd	<u>\$3,795</u>

Tuition includes:

- Housing
- Meal Plan with vegetarian options
- Project Supplies
- House Keeping Service (*For Panama City and San Miguel-based programs*)
- Laundry Facilities (*for Panama City and San Miguel- based programs, Kalu Yala-based interns may use these facilities when visiting*)
- Internet (*for Panama City- based programs*)
- Airport Transportation 3 days prior to and after the internship
- P.O. Box

We also accept payment in full and are willing to design payment plans for individuals with extenuating circumstances. *With a Payment Plan, interns are required to put the initial deposit down but their remainder will be split over several months.*

Meal Plan

Interns located in San Miguel and Panama City are provided lunch and dinner during the week, but do not receive dinner on Fridays. Due to the nature of their work, Kalu Yala-based interns receive 14 meals per week, with meal schedule varying around time spent in the field. Meals are not provided on weekends/off days.

Our chefs provide filling meals that are delicious and healthy, using what is locally available. Vegetarian options are always available.

F.A.Q.

Q: When will Kalu Yala be built?

A: Construction of Kalu Yala is set to begin in July 2013, but we are already beginning to experiment with different construction systems on site in our BaseCamp.

Q: Can I change the program dates?

A: Dates in Panama are set in stone but we invite you to do work before and after the internship through working with your Director online to do pre-arrival research and post-internship project documentation. Our Directors really don't get weekends during the semester so the time between internships is their vacation, to allow someone to stay late or arrive early would not allow for this.

Q: Do I have to pick a first-choice program when applying?

A: Yes. If you're torn between two programs, a phone interview with a Director will help guide you to which one is right for you. We can only set up a phone interview with a Director if you have a first choice listed. All of our Directors are well versed on each program.

Q: Where does our research go after we leave the program?

A: All research reports are reviewed in order to see how they could potentially help Kalu Yala make better decisions concerning subjects that are not typically well understood by financiers and contractors involved in real estate. Furthermore, all studies are catalogued to form a fountain of knowledge available to all those who are involved with Kalu Yala. We also ask for all students to post their final projects in PDF format on the website.

Q: Where does my tuition go?

A: All tuition goes back into Kalu Yala Internships, SA. It covers Meal Plan, housing, utilities, household supplies, director and chef salaries, company vehicles, program and project supplies, and the list goes on. We are happy to share our yearly budgets and current P&L upon request.

Q: Does tuition cover the cost of my flight?

A: No. You are responsible for purchasing your own flight. Airport transportation is covered by Kalu Yala Internships 3 days prior to and 3 days after the internship.

Q: Do you offer scholarships?

A: At this time, we do not offer scholarships. We have had students receive scholarship, grant and fellowship money. Their advice has been to knock on as many doors as possible: from your advisor to the scholarship office to other organizations you participate with.

Q: Can we use Kalu Yala as a vessel for our own project?

A: Yes, we get lots of proposals from students who want to use us as a project to increase their portfolio or write their thesis.

Q: Can I get credit for this in school?

A: Sometimes yes, sometimes no. It largely depends on your school and your program. We have had students receive anywhere from 0 to 17 credit hours which have included internship credit, independent study credit and actual course credit. As with scholarships, this takes legwork from you. Knock on as many doors as possible and we're happy to help fill in the blanks.

Q: Do you have to be a student?

A: No, 40% of KYI interns are still students and 60% are out of college and in their 20's. What everyone has in common is a desire to gain professional experience working on a project unlike any other in the world.

Q: Can I get a job while being an intern in Panama?

A: It would be very difficult to manage both a job and the internship so we request that students come down solely to focus on the internship. Also, labor laws are very strict in Panama so finding a job here while still in college would be challenging.

Q: What and where is San Miguel?

A: San Miguel is the last town, before you enter Kalu Yala. Our Community Outreach and Education Program interns live in San Miguel. Each semester interns have different projects they work on within the community. It is in central Panama, about an hour's drive from downtown Panama City and thirty minutes from the international airport. About 500 people live here.

Q: What is there to do in San Miguel?

A: There is a beautiful river that runs through the town, basketball courts and soccer fields. It is always fun to hang out at the local cantinas and *fondas* (restaurants) to eat and listen to '*tipico*' music. Also, you are close enough to the property to go on hikes through Kalu Yala!

Kalu Yala Internship Enrollment Application

Applications are reviewed on a rolling admission basis based on the availability of space in each program. We strongly encourage applicants to apply early. Participants are selected based on the quality of their application and short answer questions. All applicants will be contacted for a phone interview.

Prior to filling out an application, please check the dates and your finances. Interviews take over an hour to complete and with over 300 applicants in 2012, and that number growing, we don't take these lightly.

If you have ANY question of your ability to come, please email us to ask questions prior to filling out the application.

Please fill out the application online at <http://tinyurl.com/d6jum52> or email internships@kaluyala.com with questions.

Optional Spanish Classes at your location

Casco Antiguo Spanish School (CASS) teaches an intensive Spanish course the first 10 workdays of the semester for those interested. It's the perfect way to improve or jump-start your Spanish in shortest time possible. The small-group intensive course will meet 4 hrs/day in the morning or afternoon and offers a combination of intensive class time and cultural immersion to ensure quick and effective language learning.

At Kalu Yala, most of your daily interactions are in English- until you need to get something outside of our venues! Spanish is imperative and CASS has made it possible to offer this incredible opportunity on site.

CASS teachers aim to create a relaxed learning environment and provide individual support and guidance to students to ensure they learn as much as possible in the shortest possible time. The course book and all materials used in class are designed to enable students to communicate easily and effectively using real Spanish.

Though verbal communication is emphasized, the course incorporates speaking, listening, reading and writing.

Before starting, you will be placed in a group according to Spanish level (max group size 6 people, though most are 3-4). If there is only one student at a certain level (9 levels in total) the person will receive 30 hours of private lessons (3 hr/day). The cost includes a Beginner, Intermediate, or Advanced Course Book, an on-site teacher, and all materials used in class.

More information can be found on their website:

<http://cascospanish.com/courses/small-group-intensive/>.

The course is \$390 per person, including a \$195 deposit. You will pay the school directly.