

Extension Climate Survey Results

Alex Kosmider

Chair, Climate Working Group

University of Arizona Cooperative Extension

April 9, 2024



THE UNIVERSITY OF ARIZONA
Cooperative Extension

This Presentation Will Cover

- Climate Survey Goals
- Survey Distribution and Completion
- Important Climate Survey Findings
- Immediate and Ongoing Next Steps and Recommendations

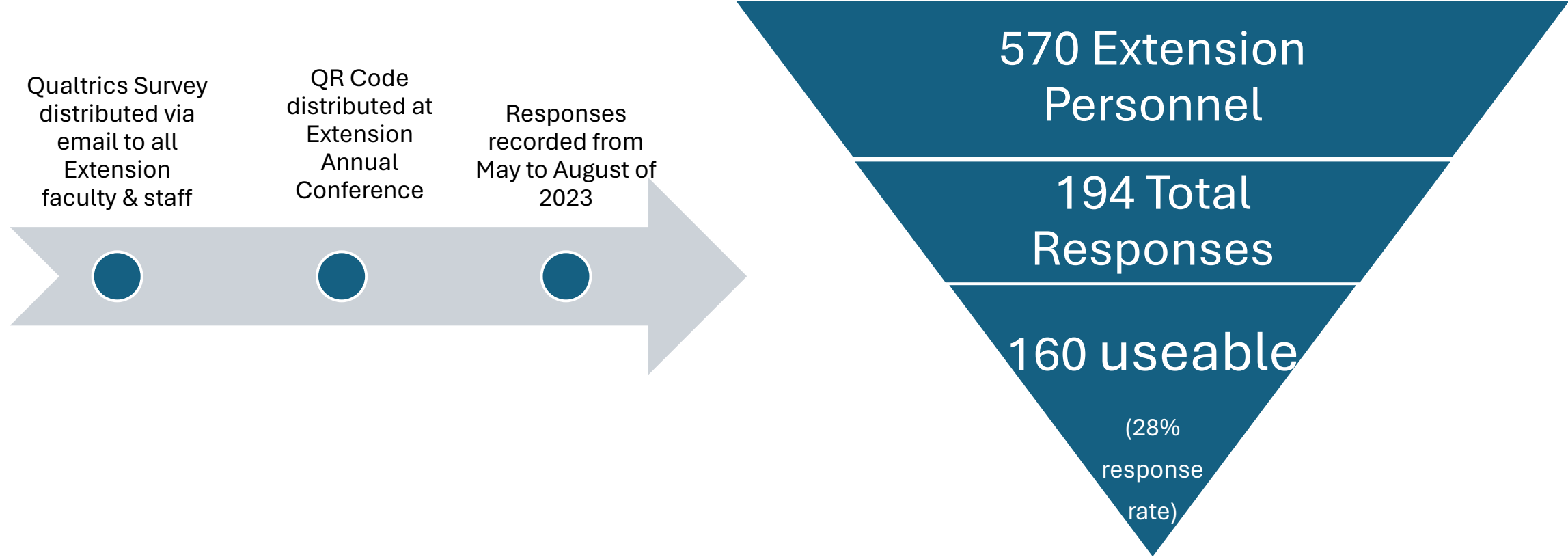
Climate Survey Goals

**Gauge
Extension
interest in
climate change**

**Inform
Extension
leadership
about existing
interest &
involvement in
climate change**

**Leverage
resources &
opportunities
to better serve
Extension
stakeholders**

Survey Distribution and Completion



Important Climate Survey Findings



Extension personnel (mostly) alarmed about climate change

1



Extension is taking some action, but coordination is needed

2



Respondents report needing support

3



Extension is well-positioned to educate on climate change

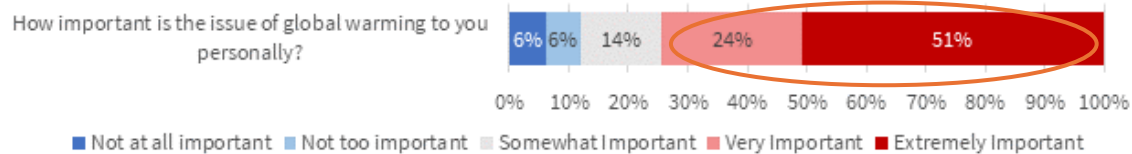
4

(Images: David Cliff, AP Photo), Brad Poole, Remoovit blog, U of A Cooperative Extension Renewable Energy Opportunity Analysis

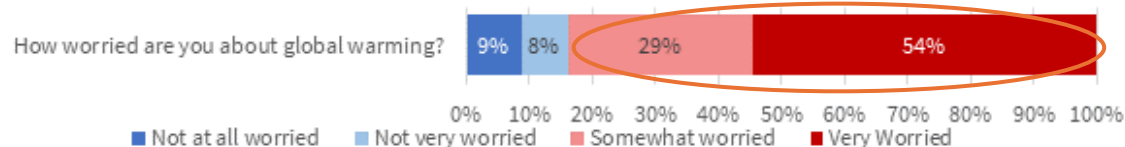
Extension personnel (mostly) alarmed about climate change



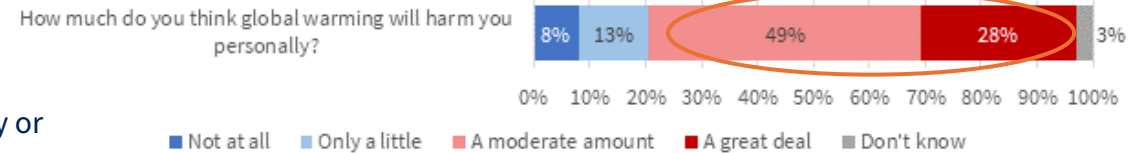
75% say that global warming is very or extremely important to them



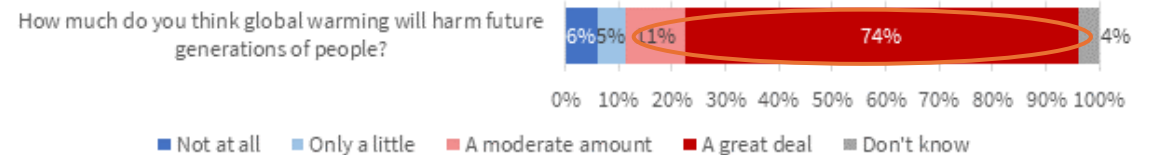
83% say that they are somewhat or very worried about global warming



77% believe global warming will harm them personally a moderate amount or a great deal

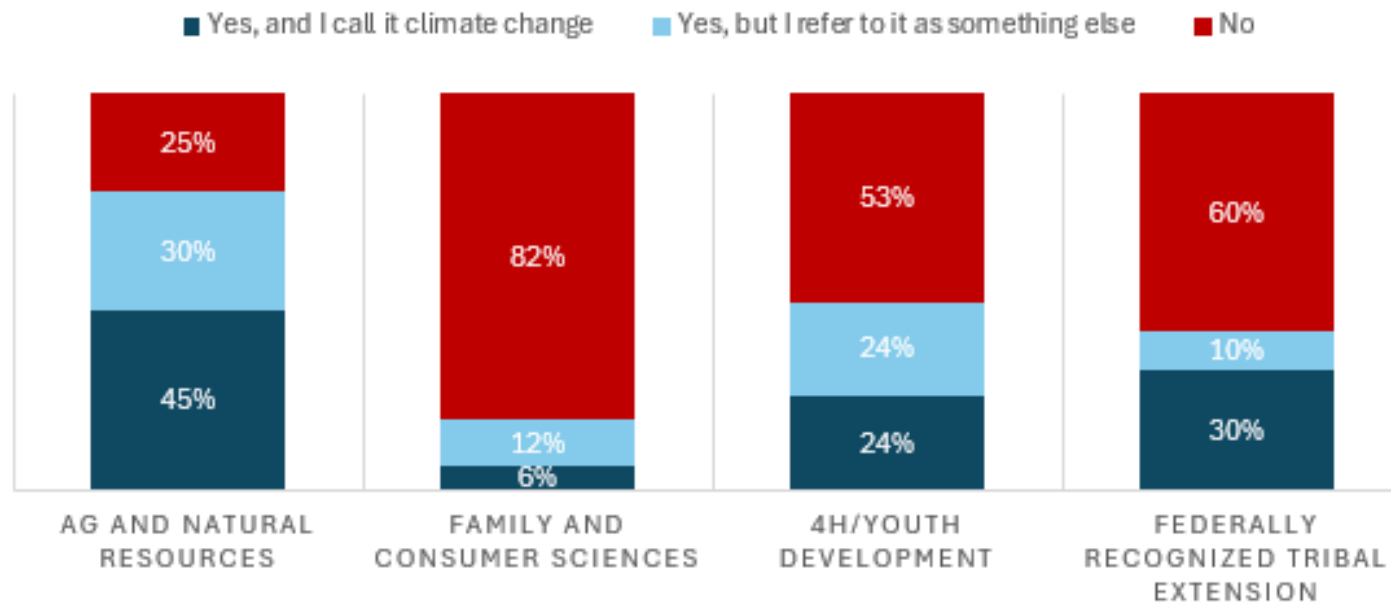


85% think global warming will harm future generations a moderate amount or a great deal.



Extension is taking some action...

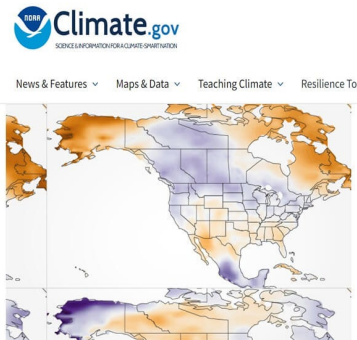
DO YOU CURRENTLY INCORPORATE CLIMATE CHANGE INTO YOUR EXTENSION PROGRAMMING (EVEN IF YOU CALL IT SOMETHING ELSE?)



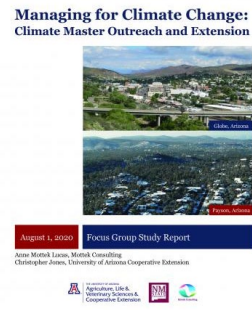
Extension is taking some action...

How do you currently incorporate climate change into your research and Extension programming?

Websites (42%)



Research contains climate-related components (18%)



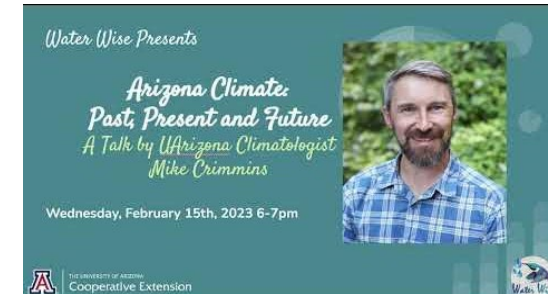
Within context of other topics (25%)



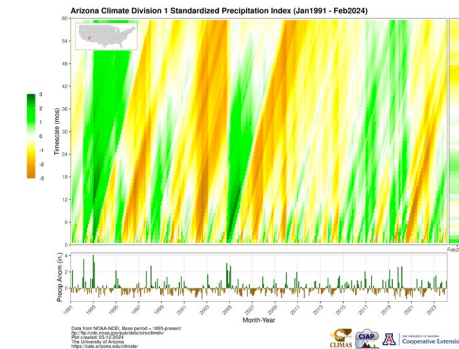
Contribute climate change content for Social Media Platforms (7%)



Coordinate events on climate change issues (15%)



Explicit research focus (4%)



Extension is taking some action...

How do you currently incorporate climate change into your research and extension programming?

Other/Do not incorporate (37%)

Remember:

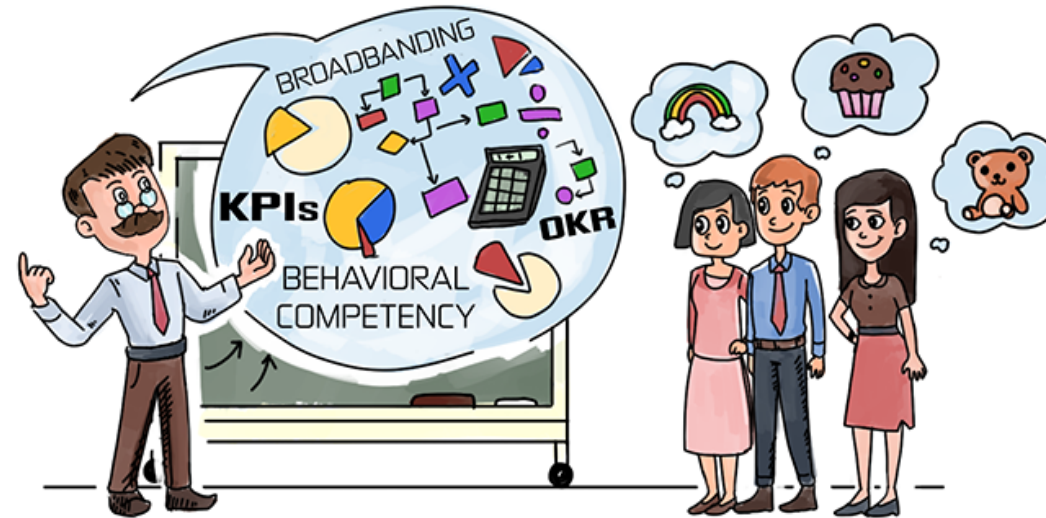
- 77% believe global warming will harm them personally a moderate amount or a great deal.
- 85% think global warming will harm future generations a moderate amount or a great deal.



...But coordinated, systematic leadership is needed

What concerns do you have about incorporating climate change into your programming?

Feeling unsure about ability to present complex climate change information accurately (27%)



resourcefulmanager

"THEY REALLY SEEM TO ENJOY WHAT I HAVE TO SAY!"

Image credit: ResourcefulManager.com

...But coordinated, systematic leadership is needed

What concerns do you have about incorporating climate change into your programming?



Not having access to climate change curriculum specific to their field (27%)



Image credit: LinkedIn

...But coordinated, systematic leadership is needed

What concerns do you have about incorporating climate change into your programming?



- Concerns about reaction of clientele to information (21%)
- Not comfortable presenting on contentious topic to clientele (13%)

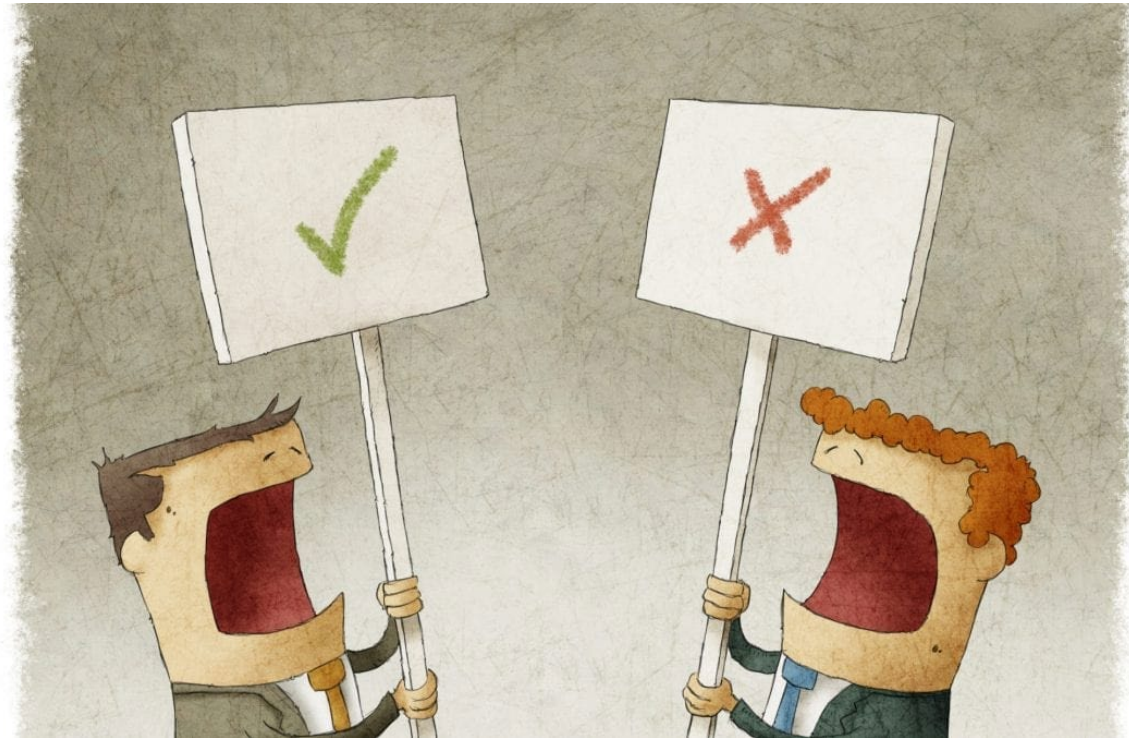


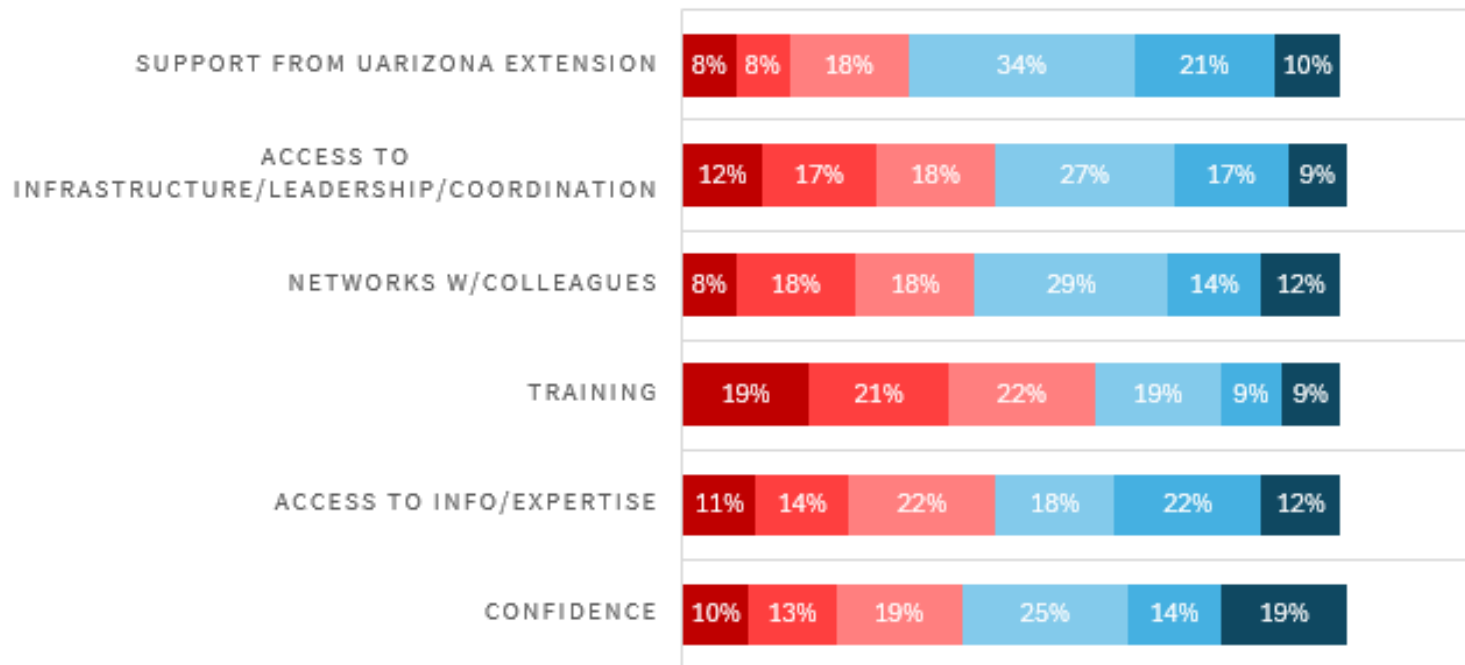
Image credit: The Usheroff Institute

Respondents report needing support

Please indicate your level of agreement with the following statements:

I HAVE SUFFICIENT _____ TO INCORPORATE CLIMATE CHANGE INTO MY PROGRAMMING

Strongly Disagree Disagree Somewhat Disagree Somewhat Agree Agree Strongly Agree



Needs support

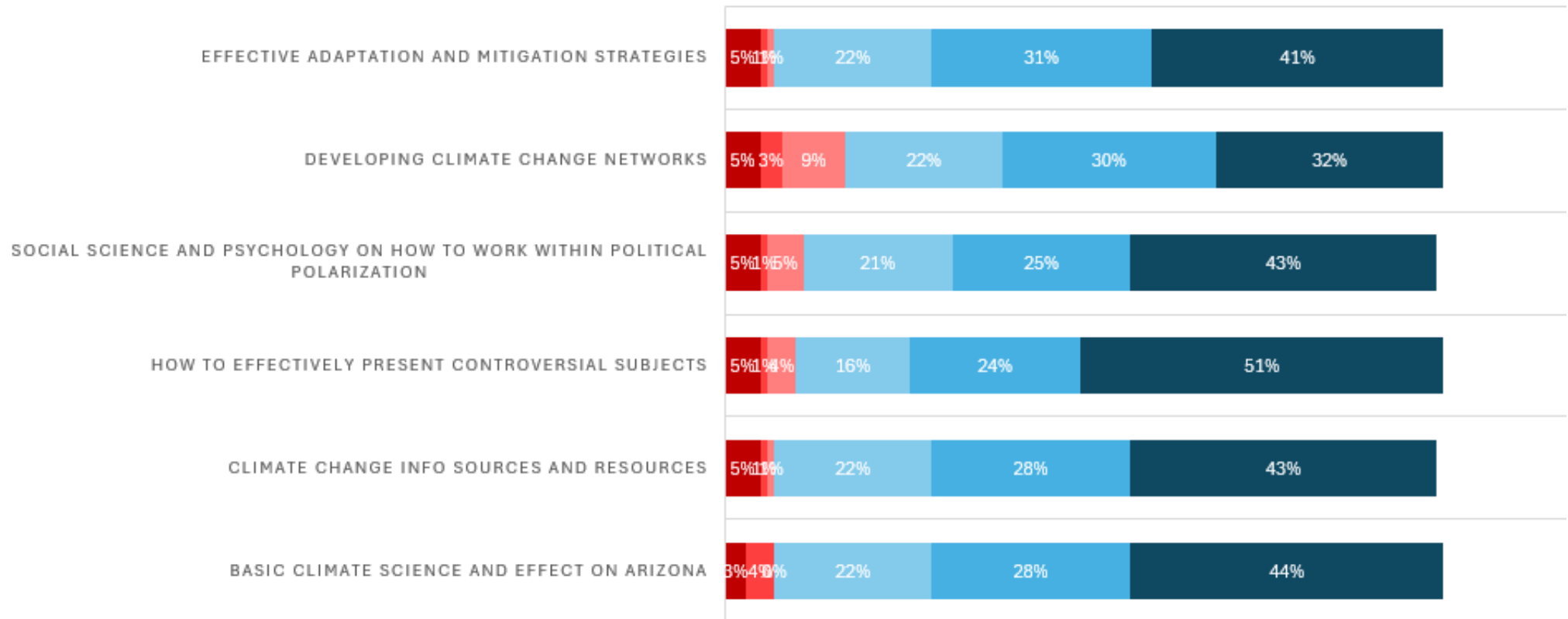


Respondents report needing support

Please indicate your level of agreement with the following statements:

TRAINING ON _____ WOULD BE USEFUL FOR ME AND MY PROGRAM

■ Strongly Disagree
 ■ Disagree
 ■ Somewhat Disagree
 ■ Somewhat Agree
 ■ Agree
 ■ Strongly Agree



Needs support



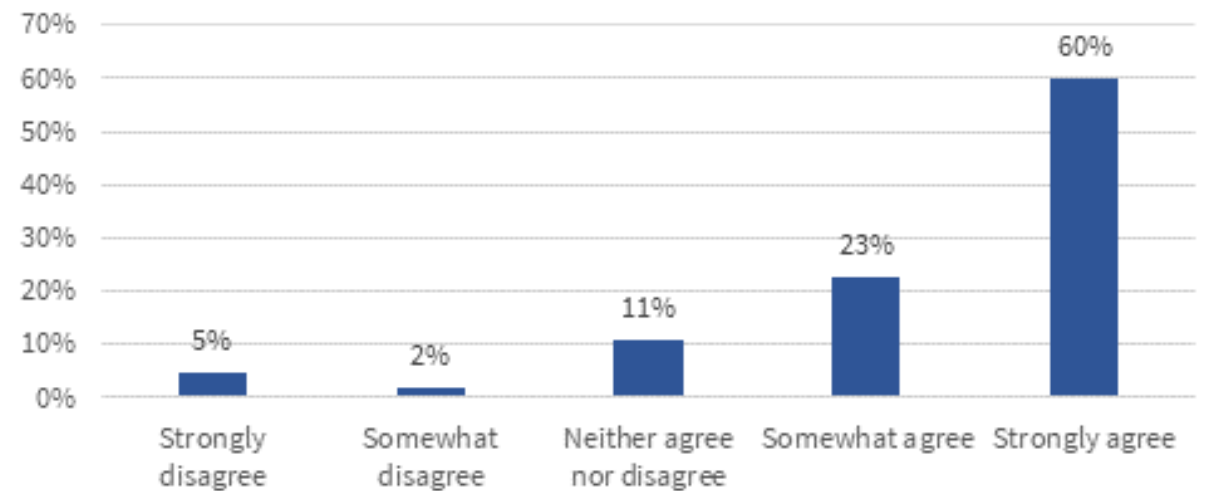
Extension is well-positioned to educate on climate change

Extension personnel motivated to act

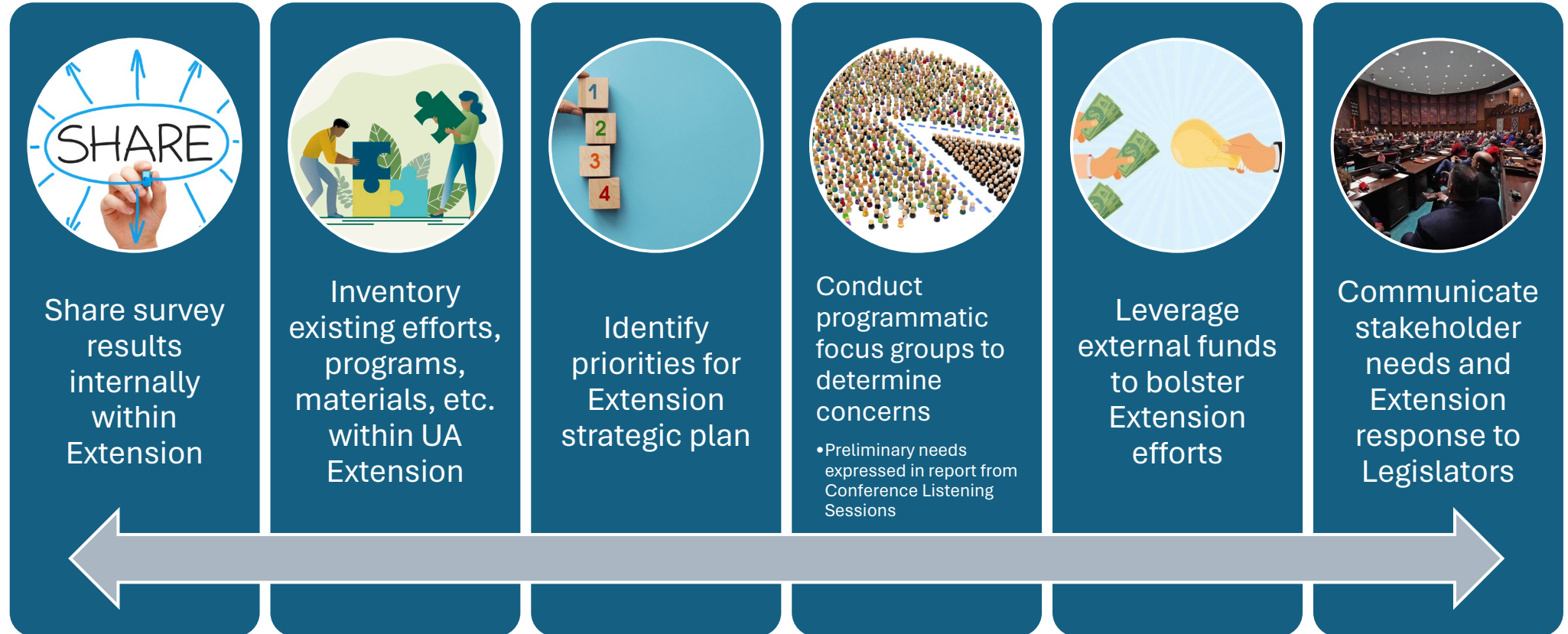
- 83% agree that climate change should be incorporated into Extension's strategic plan
- 71% of respondents see value in joining a working group within extension to build capacity for incorporating climate change into research and extension



Should climate change be incorporated into Extension's strategic plan?



Immediate Next Steps / Recommendations



Extension Well Positioned



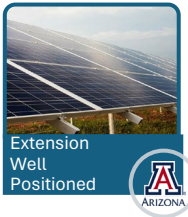
Image credits: ivelinradkov, Babson.edu, carolinekennedy.com, Adobe Stock, Rob Schumacher/The Republic

Ongoing Next Steps / Recommendations

Develop administrative program manager position

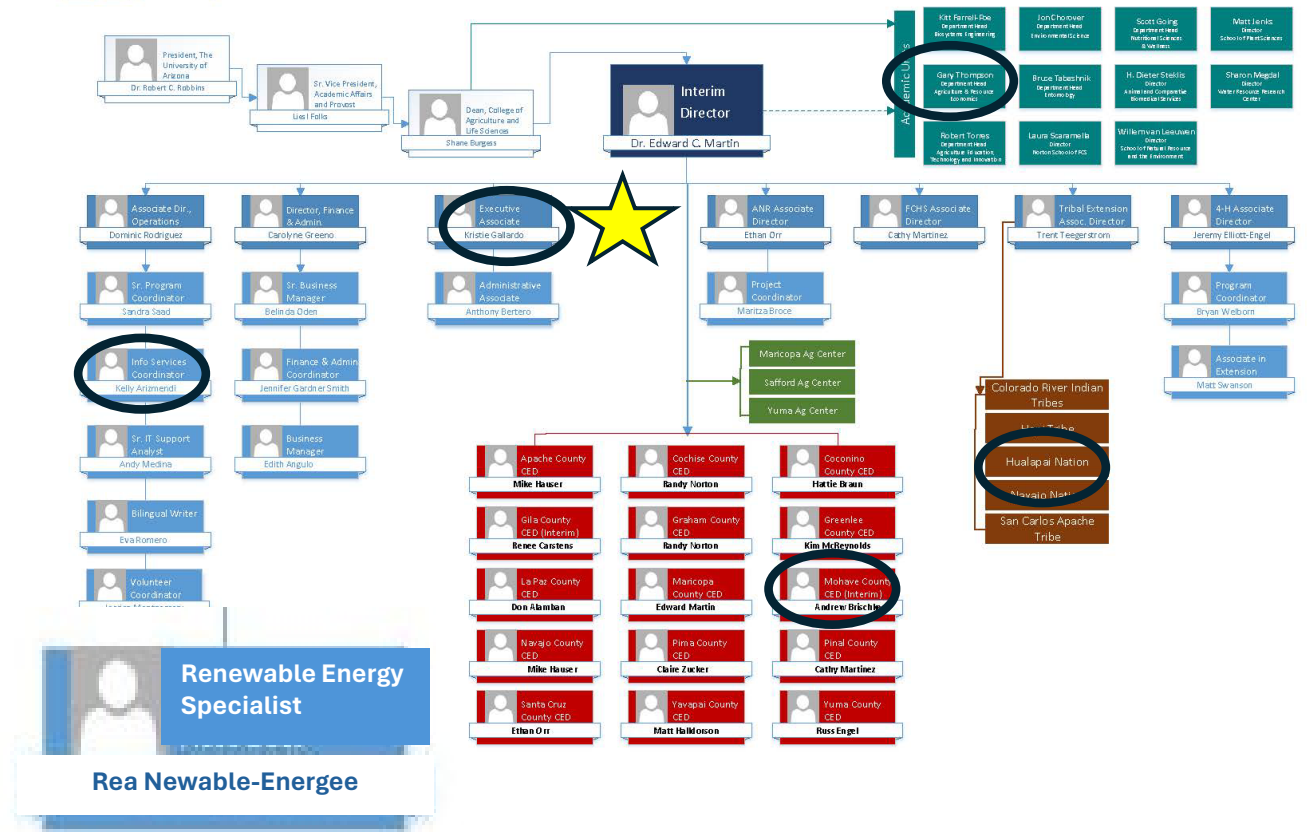
Develop interdisciplinary climate advisory board consisting of Extension and stakeholders

Identify, develop & support new Extension faculty positions to support inter-disciplinary climate change programming.



THE UNIVERSITY OF ARIZONA
COLLEGE OF AGRICULTURE & LIFE SCIENCES
Cooperative Extension

Administrative Org Chart



Questions?

alexkosmider@arizona.edu

University of Arizona Cooperative Extension Climate Working Group

Michael Crimmins
Dari Duval
Gregg Garfin
Dawn Gouge
Christopher Jones
Alex Kosmider
Ethan Orr
Ashley Wright