

# aWhere<sup>9</sup>

## SOLUTIONS & SERVICES

### For Economic Resilience to Climate Change

#### ERCC

Delivers a **contiguous weather surface** which powers precise, localized solutions



DATA

Ability to **plan ahead** and anticipate changes in the food supply chain



INSIGHT

Climate change increases weather extremes & variability, aWhere's **solutions deliver economic resilience** for farmers, industry, and governments



ACTION



ECONOMIC RESILIENCE  
TO CLIMATE CHANGE

## 01 IN-TIME WEATHER DATA TO DRIVE DECISIONS

**BASE** and **ADVANCED** weather data provide visibility to the challenges of weather variability.

### BASE DATA

Daily weather for past 11 years

Precipitation  
Temperature (min/max)  
Relative Humidity (min/max)  
Wind Speed (min/max)  
Solar Radiation

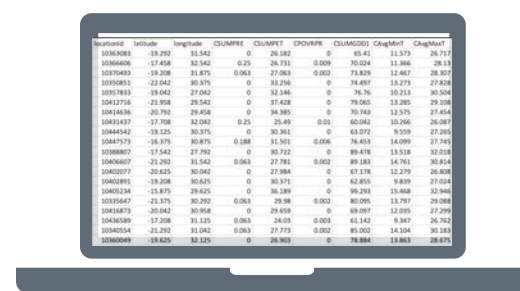
7 days of hourly forecast

### ADVANCED DATA

Advanced Agricultural Information & Insight

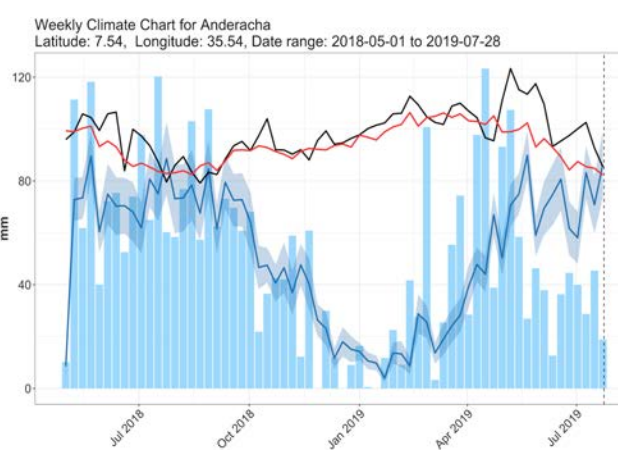
Growing Degree Days (GDD)  
Potential  
Evapotranspiration (PET)

Crop specific growth stage models



**aWhere's rich data is available in multiple common formats**

**Weekly Climate Charts highlight variability from year to year and week to week**



[Sign-up here to get started](#)

## SOLUTIONS

aWhere combines the **granularity** of a weather station with the **spatial coverage** of a satellite

**1.7 million virtual weather stations** placed within 6.4 km of your location to **fuel data-driven agronomy**

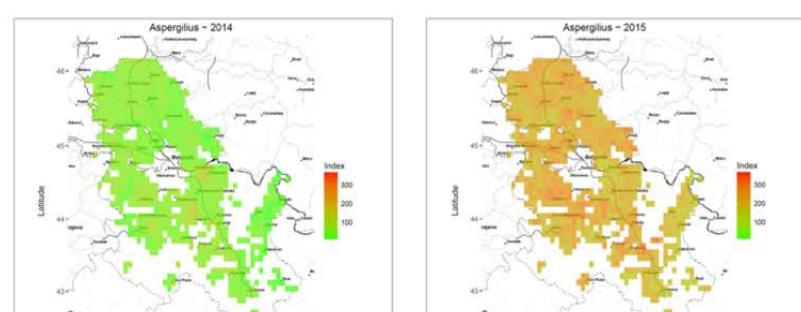
Advanced indices **inform key field operations** and signal when different crops are under drought stress

Growing degree days to **know when your crop is reaching key production stages** and ready for harvest to optimize quality

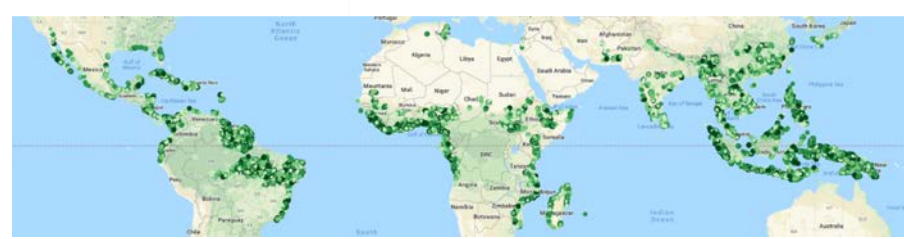
Look back in time to see how **weather variability has impacted crop production**, serving as a strong base for weather-indexed financial instruments to **manage risk**

## 02 WEATHER INSIGHTS

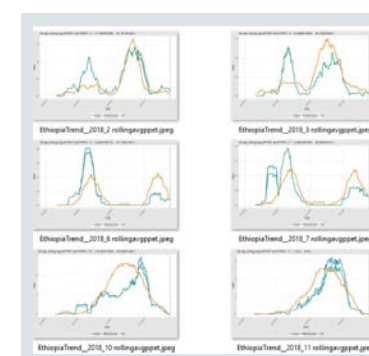
Crop models fueled with in-time weather data to **deliver actionable solutions**.



**Pest & Disease Prediction**  
*Where are pests/diseases occurring?*



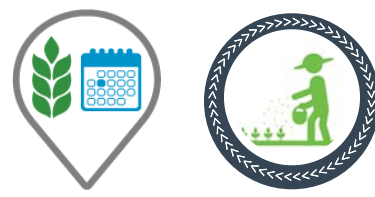
**Crop Suitability & Site Similarity**  
*Where can this crop grow?*



**Environmental Trend Analysis**  
*How is the climate changing?*



**Early Famine Warning & Food Security**



**Optimal Planting Date & Fertilizer Recommendations**



**Irrigation Management**

## SOLUTIONS

Six different insight domains can **provide tactical management recommendations** for strategic decisions to deliver **Economic Resilience to Climate Change**

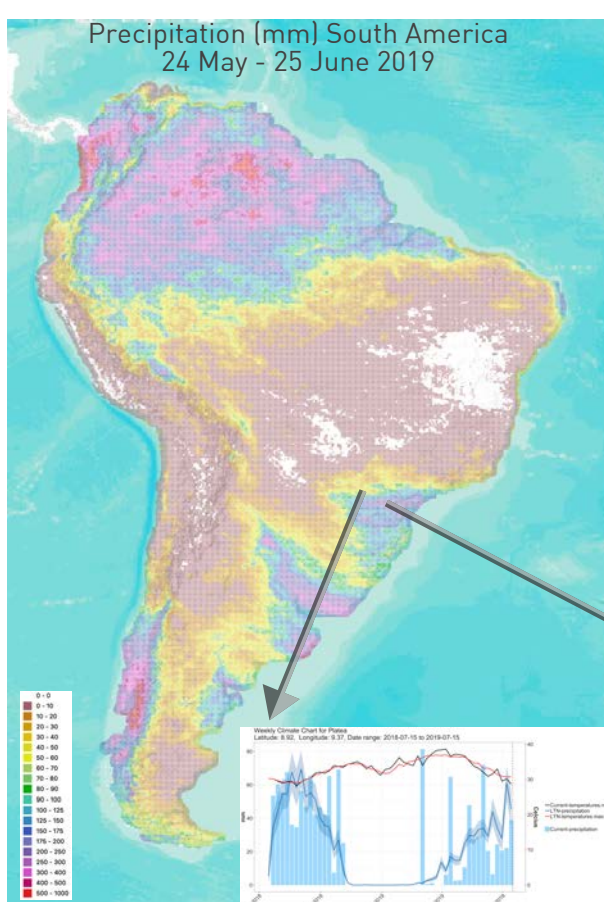
Insight products draw on years of practical expertise in agrometeorology, agronomy, crop improvement, markets and policies to **empower our clients** to make timely, quantitative and relevant decisions to enhance production, quality, and **reduce risks** by making **climate-smart decisions** along the entire agriculture value chain

## 03 Maps4ER

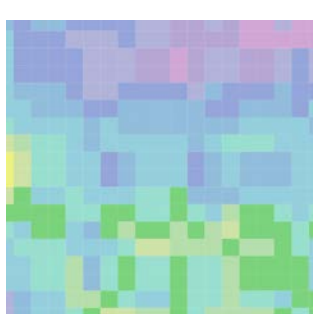
Maps for Economic Resilience



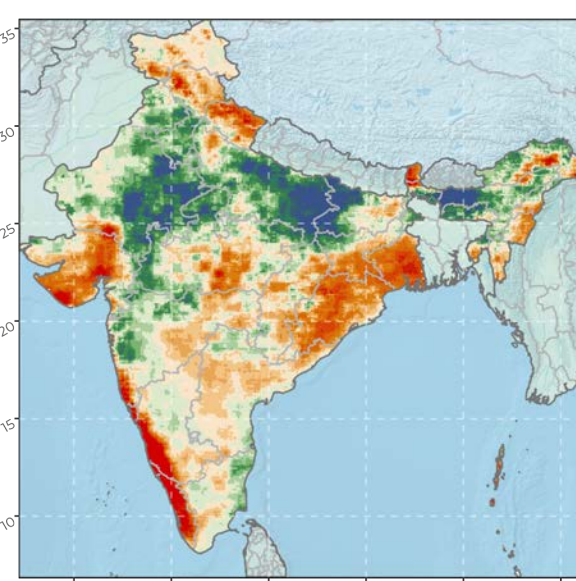
aWhere generates **GIS-ready information products** everyday. This time-series content seamlessly integrates with your GIS resources enabling insights for farms, industry, and governments.



**GIS-ready files allow users to determine trends from the continental level to the local, farmer level at a 9km x 9km resolution**



India  
Precipitation Difference from Normal  
30 Jun 2019 to 29 Jul 2019



**aWhere's platform "The Signal" quickly visualizes our weather surfaces including advanced indices**

[Sign-up here to get started](#)

## SOLUTIONS

News flashes of weather anomalies appear around the globe but only aWhere provides **localized GIS-ready contiguous surfaces** of accurate observed weather data so you can determine the impact of these anomalies

MAPS4ER provides your team with global weather content that **enables powerful visuals and quantitative analytics** over time and space. Use this to guide investments, infrastructure, food-systems, and policy decisions to deliver concerted and coordinated **Economic Resilience to Climate Change**

## 04 CUSTOMIZED SOLUTIONS

With training, modeling, strategy support, and deployment with partners we are **integrating weather insights** to make better decisions.



**Advising national governments on de-risking agriculture using aWhere weather data and analytics tools**



**Training data scientists on accessing, analyzing, and driving insights from aWhere weather data**



**Customized analytics using multiple data resources and tools**

## SOLUTIONS

Train national talent to build a local community to leverage the power of large weather databases, statistical tools (e.g. R) and GIS to generate insights and recommendations to deliver **Economic Resilience to Climate Change**

Partner with governments, industry, and academia to take a **data-driven approach to developing policies and investment plans** for **Economic Resilience to Climate Change** and provide tactical insights into the implementation of these plans using in-time global observed weather data

While each solution delivers value, full value is unlocked utilizing our bundled services to deliver custom solutions at scale, now.

Learn more at [www.awhere.com](http://www.awhere.com)

Download real examples of data from The Signal and explore the Ag-weather: <https://apps.awhere.com>

Visit our Developer Portal to explore our API at <https://developer.awhere.com>

Contact us to access these insights for your area of interest at [beawhere@awhere.com](mailto:beawhere@awhere.com)

Certified

