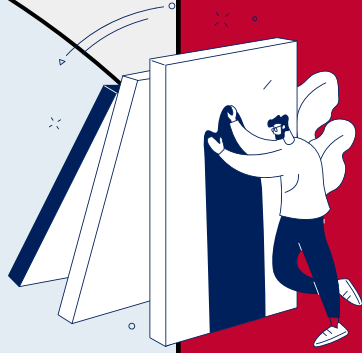


# People-Centered Leadership Miniseries with Dr. Paul Melendez

*University Distinguished Outreach Professor  
Founder, Center for Leadership Ethics  
Department of Management and Organizations  
Eller College of Management  
The University of Arizona*

## The Leader Within

Wednesday, September 6th 11:00 am to 12:30 pm



This module will inform participants of the advantages of leaders that are vital mood takers, thoughtful critics, and engender trust. The module will achieve the following learning objectives:

- Distinguish between managers and leaders.
- Recognize the qualities of transformational leaders.
- Learn the components of trust.

## Leading Through Emotional Intelligence

Wednesday, November 15th 11:00 am to 12:30 pm

This module will teach participants how to identify, understand, and manage their emotions at work and motivate their teams. The module will achieve the following learning objectives:

- Discover the neurological basis of emotions.
- Recognize how emotional intelligence can help leaders observe, detect, and regulate emotions.
- Leverage emotional intelligence to improve leadership performance.

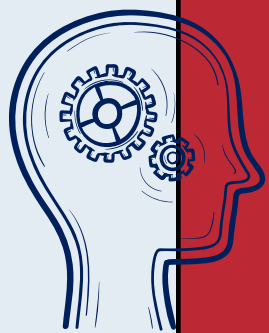


## Unconscious Bias

Tuesday, January 9th 11:00 am - 12:30 pm

This module will raise participant awareness of unconscious bias, educate participants on the root causes of unconscious bias, and challenge participants to make changes in their personal and professional lives. The module will achieve the following learning objectives:

- Identify daily unconscious bias traps.
- Provide insights on how to counter unconscious bias.
- Recommend techniques to make change.



All sessions will be located in ENR2, S215 and are intended to be taken as a three part series. Please RSVP using the link below.

<https://xoyondo.com/su/KpbRP0VegNQH1Pe/kBnwwVZICb>

In person attendance is encouraged but all parts of this miniseries will be available on Zoom and recorded

 Zoom : <https://arizona.zoom.us/j/7804480109>



THE UNIVERSITY OF ARIZONA

Agriculture, Life &  
Veterinary Sciences &  
Cooperative Extension