



PAC Information Session for Department Heads, Chairs, and Directors

Jan 12, 2022



Pandemic Academic Coordination Work Group

Diane Austin, daustin@arizona.edu

Nina Bates, ninaari@arizona.edu

Paloma Beamer, pbeamer@arizona.edu

Tina Deemer, deemer@arizona.edu

Lisa Elfring, elfring@arizona.edu

Kate Ellingson, kellingson@arizona.edu

Kristen Pogreba Brown, kpogreba@arizona.edu

Dawn Hunziker, hunziker@arizona.edu

Chris Kopach, ckopach@arizona.edu

Lori Schultz, lschultz@arizona.edu

Robert Stephan, rstephan@arizona.edu

Alex Underwood, aunderwood@arizona.edu



Land Acknowledgement

"We respectfully acknowledge the University of Arizona is on the land and territories of Indigenous peoples. Today, Arizona is home to 22 federally recognized tribes, with Tucson being home to the O'odham and the Yaqui. Committed to diversity and inclusion, the University strives to build sustainable relationships with sovereign Native Nations and Indigenous communities through education offerings, partnerships, and community service."



Housekeeping

- Please **mute** your audio when the presenters are presenting.
- **To ask questions live** during the session, please **submit your question in the Chat window** located on the bottom of Zoom page. FAQs will be posted on <https://covid19.arizona.edu/instructor-faq>
- The Chat function allows you to send chat messages to your colleagues in the meeting.
- The webinar Recording and any presentation materials will be available after the webinar at <https://provost.arizona.edu/content/pac>



AGENDA

- Infrastructure Updates – [Chris Kopach](#)
- Public Health Advisory Coronavirus Team (PHACT) & COVID-19 Mitigation Updates – [Kate Ellingson/Paloma Beamer](#)
- Positive Case Notification Protocols – [Kristen Pogreba Brown](#)
- Academic Instruction Updates – [Rob Stephan](#)
- Central Classroom Updates – [Tina Deemer/Alex Underwood](#)
- Disability Resource Center Updates – [Dawn Hunziker](#)
- Research Updates – [Lori Schultz](#)
- Questions & Discussion – [Diane Austin/Lisa Elfring](#)



THE UNIVERSITY OF ARIZONA
FACILITIES MANAGEMENT

APPA AWARD FOR EXCELLENCE
RECIPIENT 2013-23

What Has UArizona Done to Prepare Campus for Re-Entry?

- Ramped up cleaning and disinfecting beginning in January 2020 .
- Use of Oxivir cleaner, which kills the COVID-19 virus.
- Adherence to CDC guidelines to ensure the health and safety of the campus community.
- Trained members of our Custodial Staff on COVID isolation, cleaning, including PPE and proper cleaning techniques.
- Centralized PPE purchasing and storage for the campus.
- Our Small Engine Shop has been converted to a disinfecting station, filling and replacing thousands of bottles of disinfectant to share across campus.
- Established Isolation Dorms and student isolation transportation.
- Campus Health provides voluntary vaccinations and COVID-19 testing for symptomatic cases.
- Student Union houses COVID-19 testing.

Preparing Campus for near-normal operations

To Date:

- 2,000 Sneeze Guards installed
- Signage installed in 100 buildings
- 1,530 Wall Mounted Hand Sanitizers installed
- 2,350 Touch-Free Paper Towel Dispensers installed
- 1,310 Toilet Seat Covers installed
- 8,000 MERV Filters installed

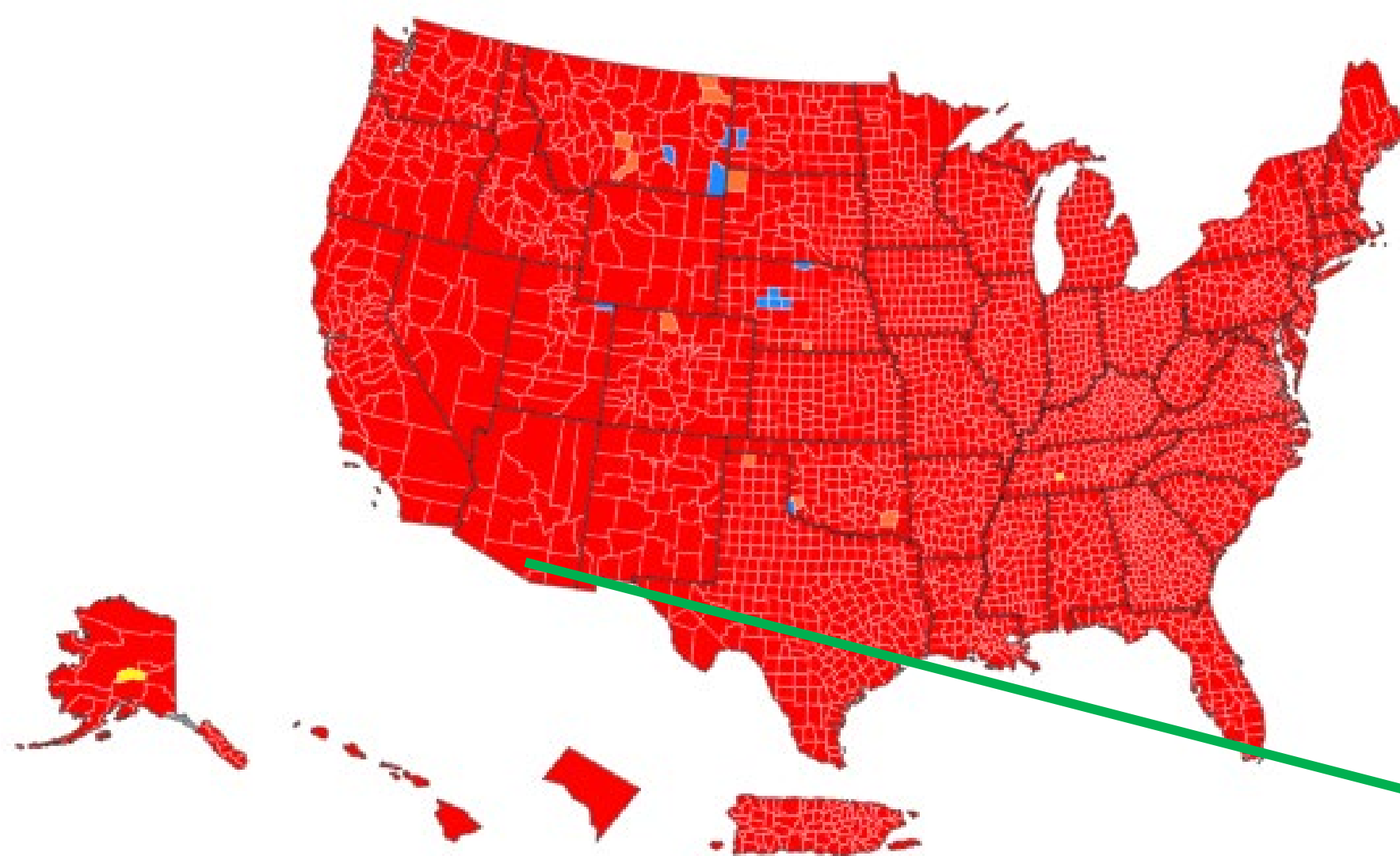
Steps taken by FM to Reduce Covid Exposure via HVAC Systems

- Monitored and implemented guidance coming from the CDC, WHO, ASHRAE, etc.
- Evaluated all campus air handlers to ensure proper operations
- Evaluated and documented the air changes per hour in all classrooms
- Increased ventilation to maximize fresh air entering our buildings
- Increased air filtration levels to MERV 13 in all major air handlers
- Continue to service all campus air handlers on a quarterly schedule
- Purchased desktop carbon dioxide (CO₂) monitors* and HEPA filtered air scrubbers which are available for use in areas with lower air changes per hour

*CO₂ monitors indicates the level of exhaled air in a room – and may serve as a proxy indicator for the risk of Covid-19 virus particles spread through aerosols, if infected individuals are present.

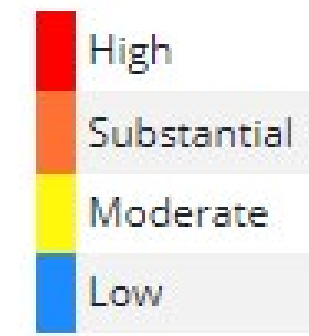
Public Health Advisory Coronavirus Team (PHACT)

Updates: National Surge



Determining Transmission Risk

If the two indicators suggest different transmission levels, the higher level is selected



| | Low | Moderate | Substantial | High |
|---|-----|----------|-------------|--------|
| New cases per 100,000 persons in the past 7 days* | <10 | 10-49.99 | 50-99.99 | ≥100 |
| Percentage of positive NAATs tests during the past 7 days** | <5% | 5-7.99% | 8-9.99% | ≥10.0% |

Pima County, Arizona

[State Health Department](#)

[7-day Metrics](#) | [7-day Percent Change](#)

Community Transmission ● High

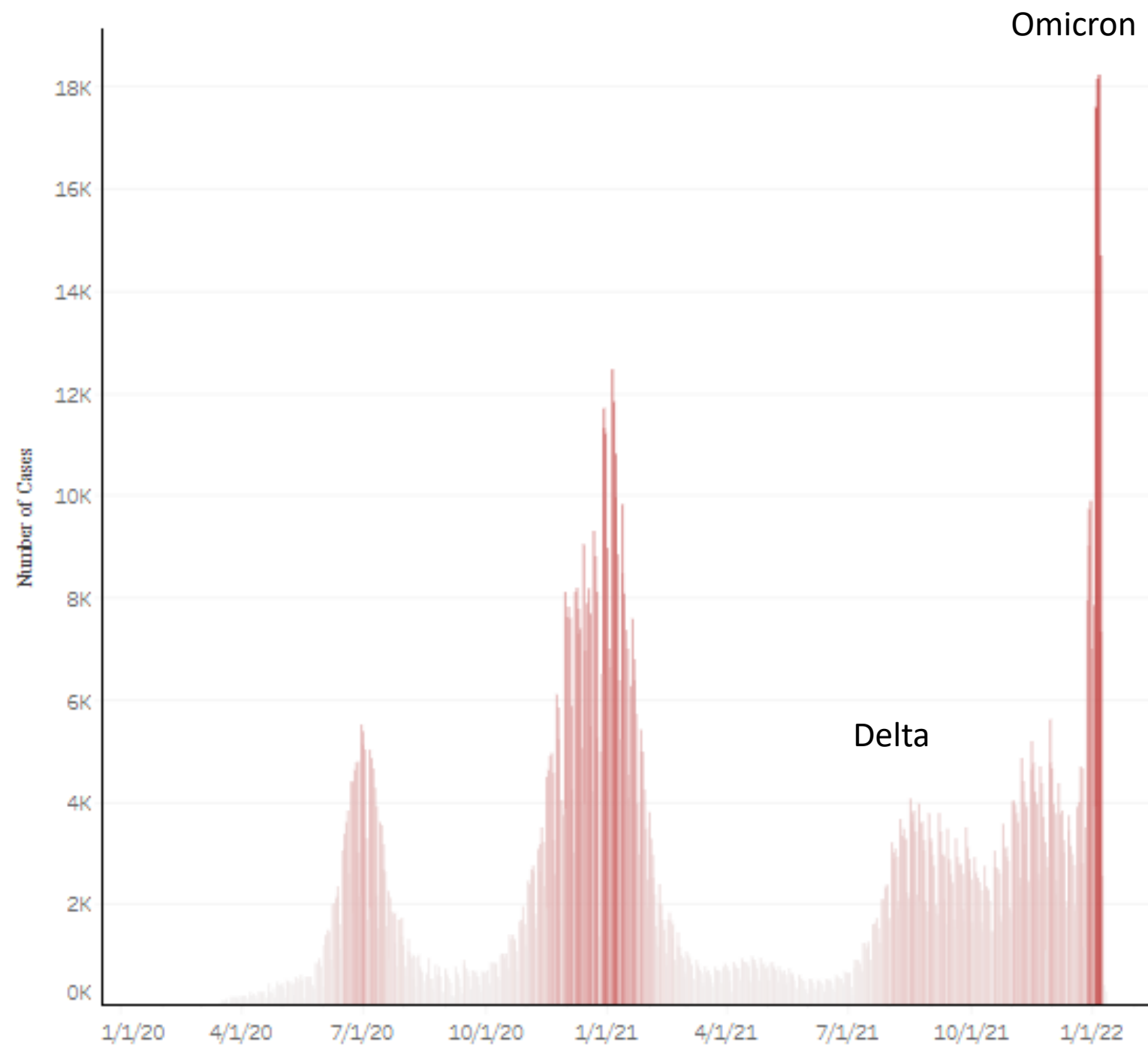
Everyone in **Pima County, Arizona** should wear a mask in public, indoor settings. Mask requirements might vary from place to place. Make sure you follow local laws, rules, regulations or guidance.

[How is community transmission calculated?](#)

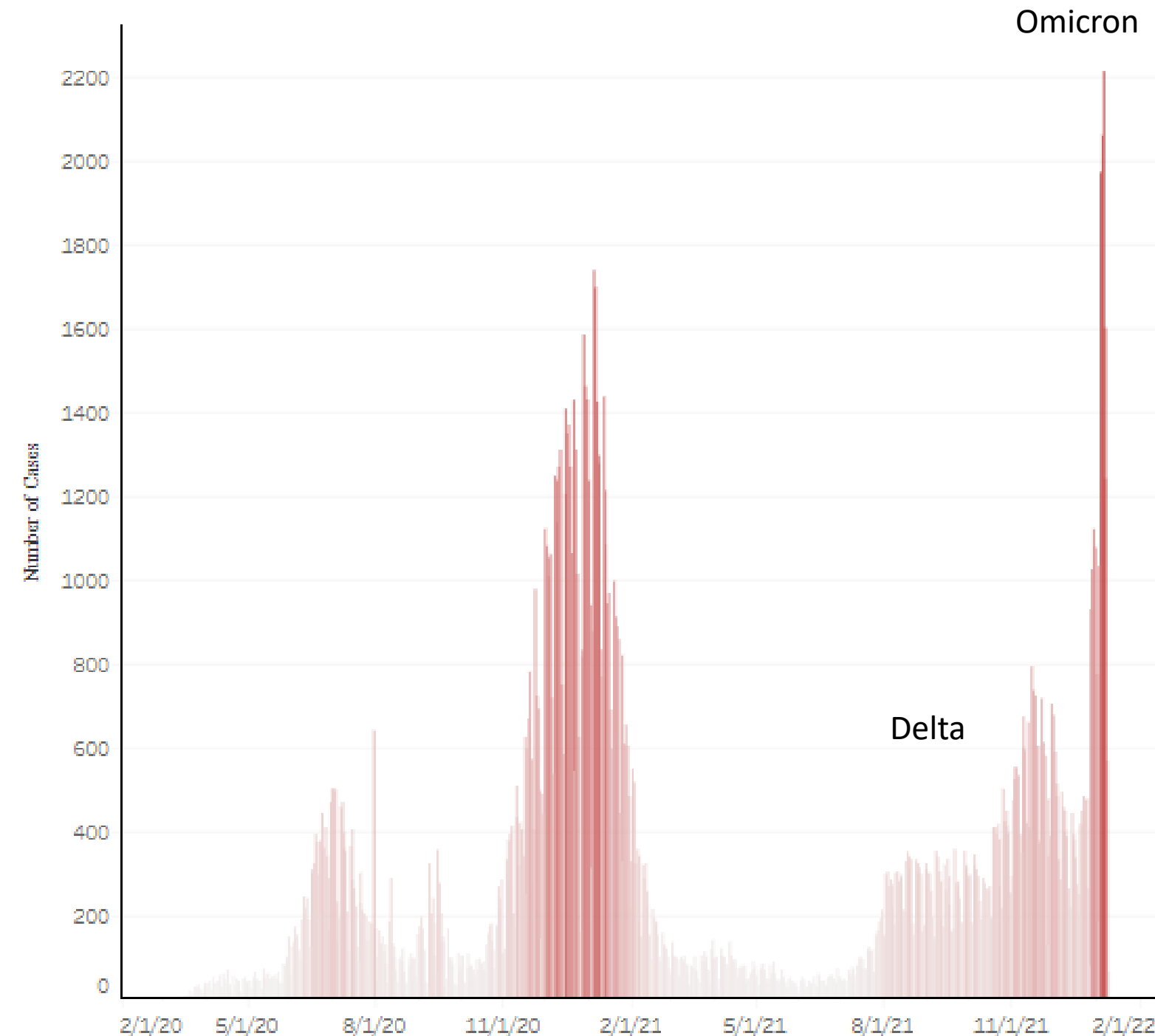
| | January 12, 2022 |
|---|------------------|
| Cases | 10,861 |
| Case Rate per 100k | 1,037.07 |
| % Positivity | 26.52% |
| Deaths | 65 |
| % of population ≥ 5 years of age fully vaccinated | 68.3% |
| New Hospital Admissions | 234 |

Public Health Advisory Coronavirus Team (PHACT)

Updates: Sharp Rise State/County Cases



Arizona Case Counts



Pima County Case Counts



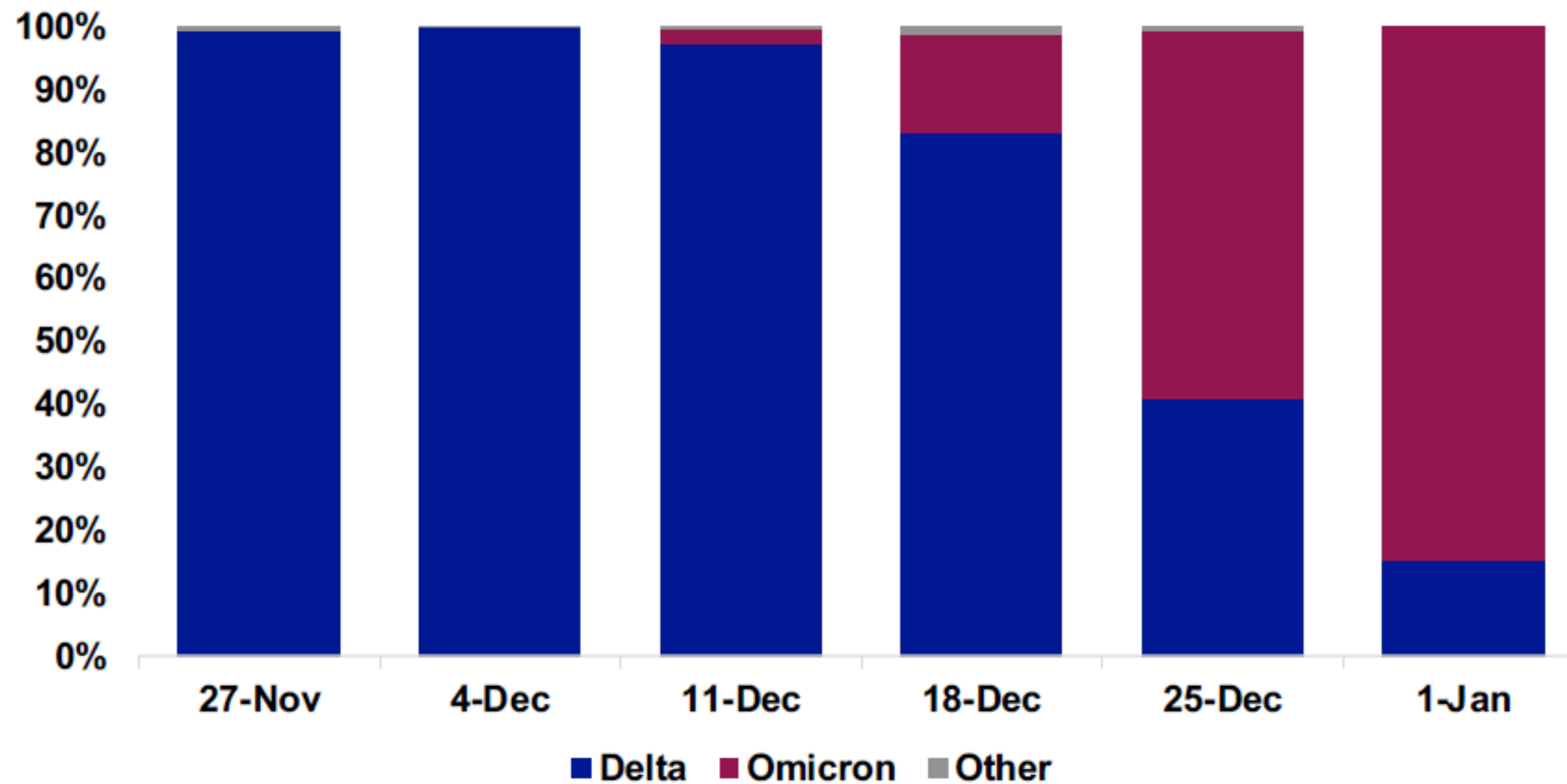
THE UNIVERSITY OF ARIZONA

Public Health Advisory Coronavirus Team (PHACT)

Updates: **Omicron vs. Delta**

Arizona/Tgen [Arizona Variant Tracker](#)

Proportion of Circulating Variants by Week



Jan 12 Update: **96.8% Omicron**

Omicron (vs. Delta) is:

- More transmissible (UK, 2x household transmission)
- Has lower rates of hospitalization (Kaiser, CA, 50% decline)
- Higher rates of infection and hospitalization for unvaccinated (CDC)
- Can cause severe disease in those with chronic conditions or who are immunocompromised (CDC)
- Causes higher proportion of breakthrough infections
- Lower vaccine effectiveness for infection and hospitalization (although still high -about 70%- VE for hospitalization)

Public Health Advisory Coronavirus Team (PHACT)

Updates – Sharpest Rise in the Young Adults

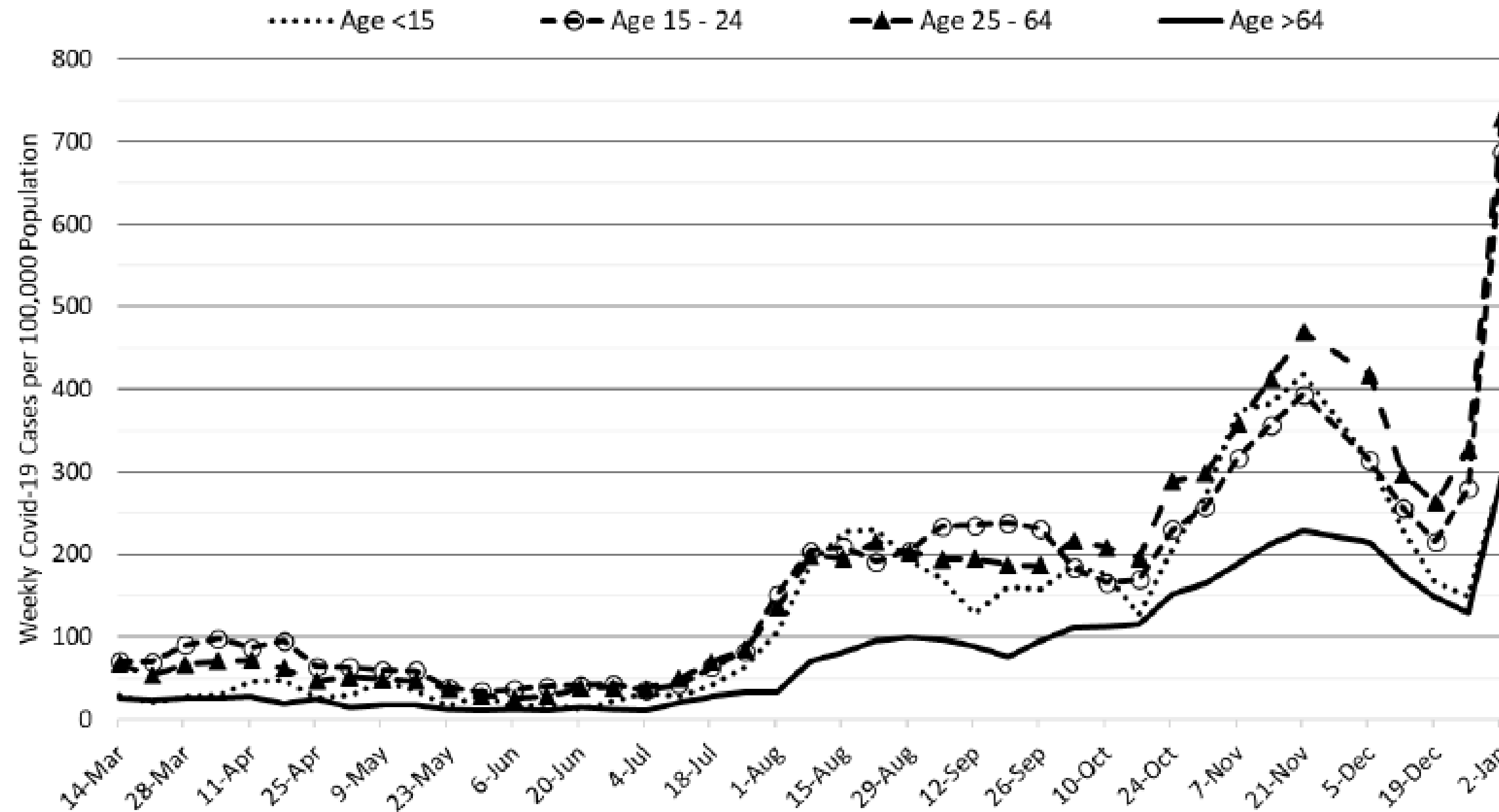


Figure 10. COVID-19 Cases in Pima County by Age Group March 7, 2020 – January 2, 2022. (Data from week ending November 28 are suppressed).

Age Considerations

- Sharpest increase in young adults
- Slower in >64 and <15
- Expect <15 to rise with return to elementary school
- Mixing young and older or immunocompromised in educational settings presents risk to older individuals
- Child hospitalizations rising, particularly in younger, unvaccinated age groups



Public Health Advisory Coronavirus Team (PHACT)

Updates – Hospitals Operating at Margins

Pima County Healthcare Metrics [COVID-19 Dashboard](#)

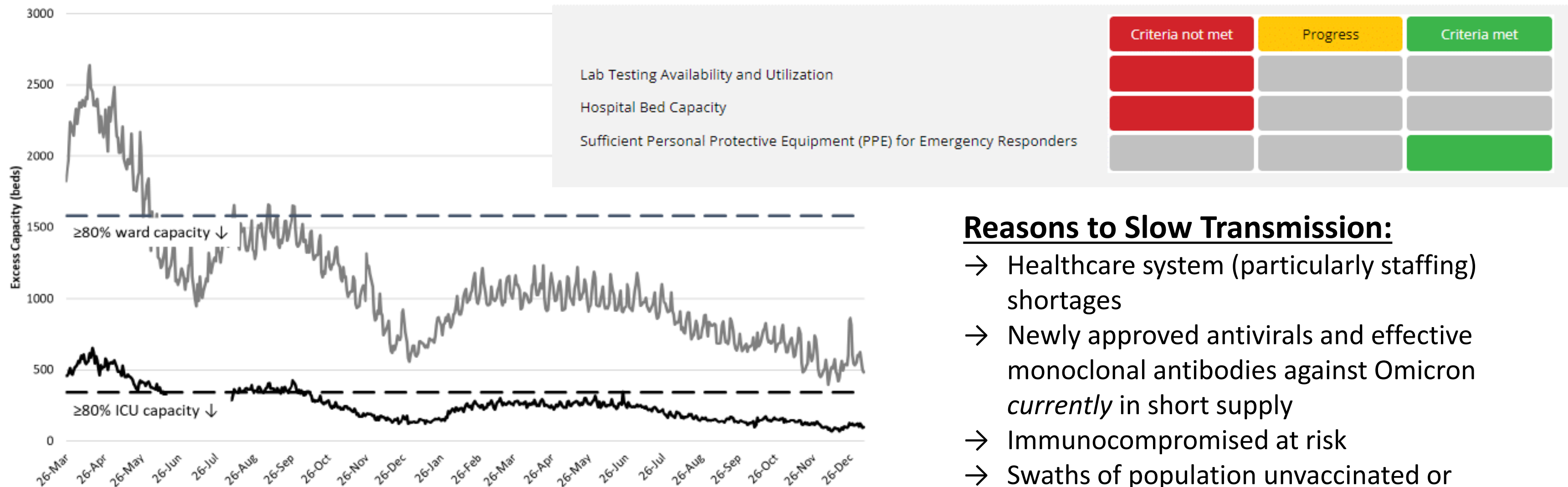


Figure 6. Observed Excess Non-Surge General Ward and ICU Capacity in Arizona March 26, 2020 – Jan 6, 2022.

[Weekly Report](#) by Joe Gerald, PHACT Co-Lead

Reasons to Slow Transmission:

- Healthcare system (particularly staffing) shortages
- Newly approved antivirals and effective monoclonal antibodies against Omicron *currently* in short supply
- Immunocompromised at risk
- Swaths of population unvaccinated or ineligible for vaccination

Public Health Advisory Coronavirus Team (PHACT)

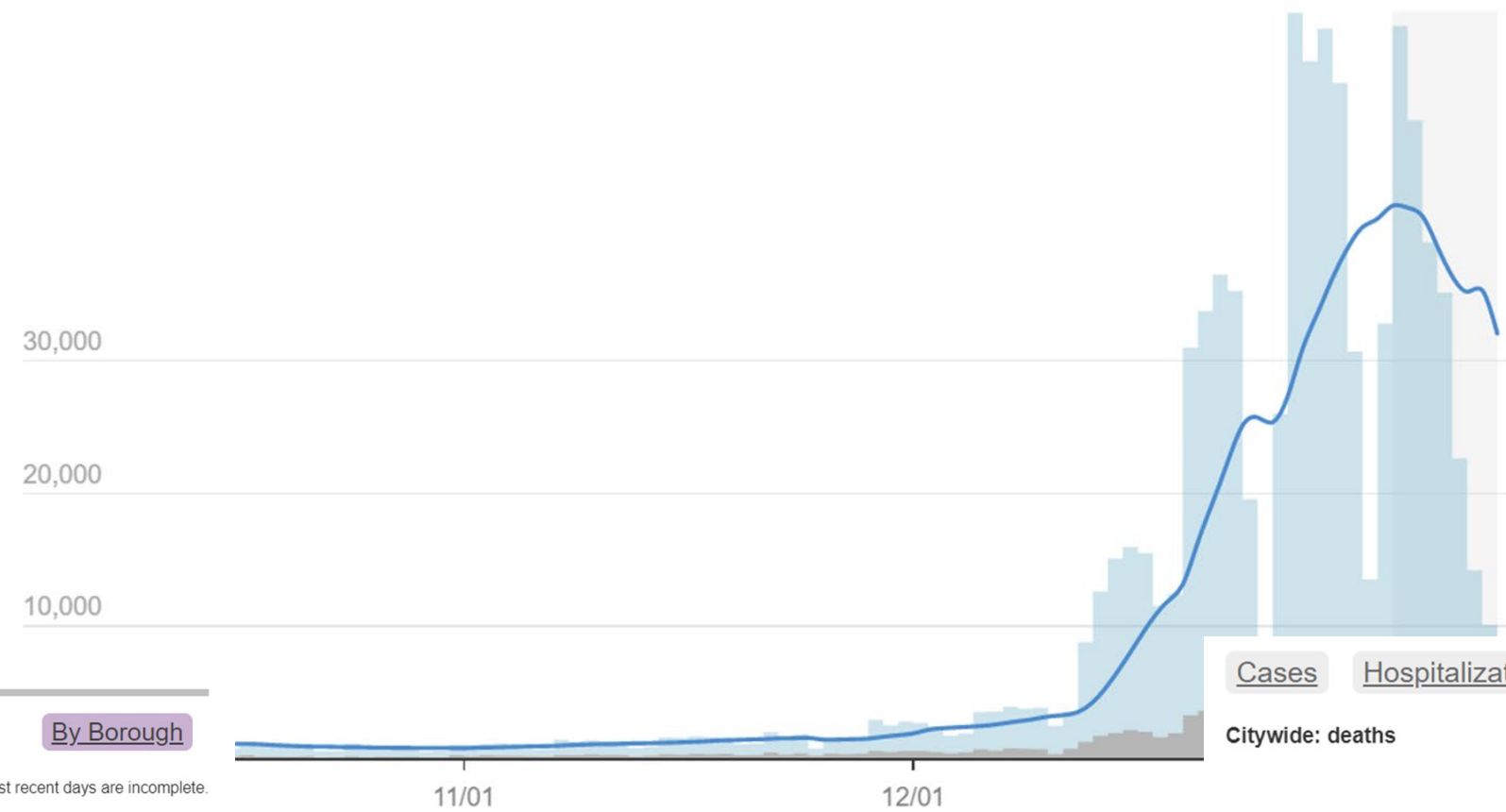
Updates – Narrow window for spike – NYC Data

Cases Hospitalizations Deaths

By Borough

Citywide: cases

Data from the most recent days are incomplete.

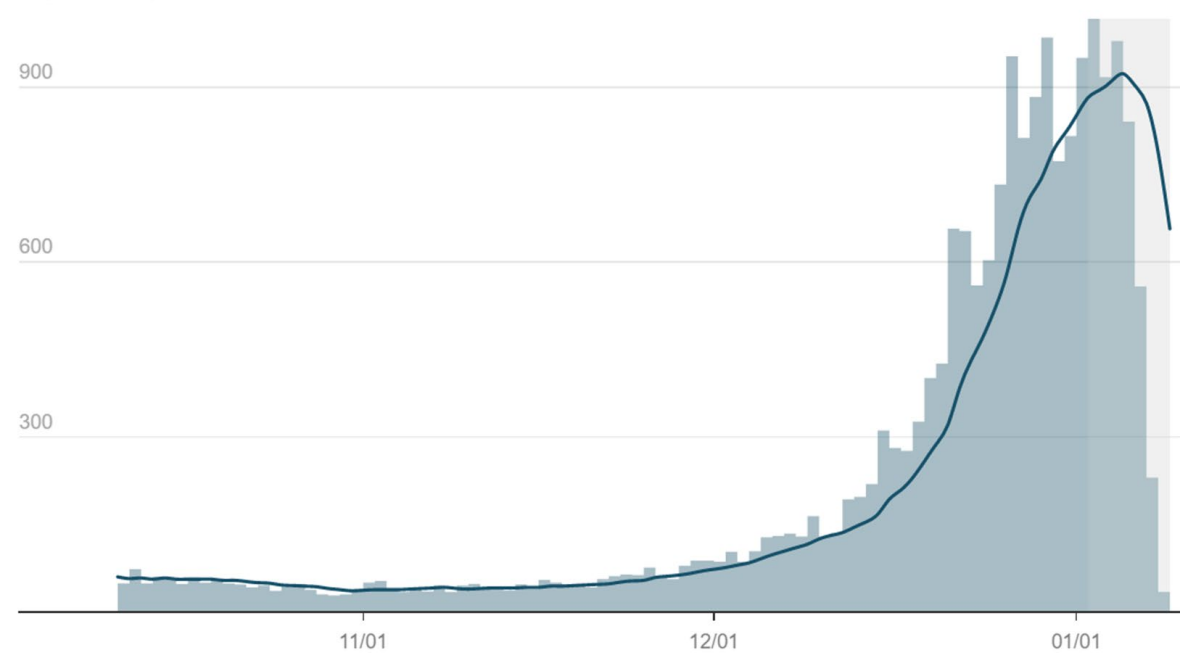


Cases Hospitalizations Deaths

By Borough

Citywide: hospitalizations

Data from the most recent days are incomplete.

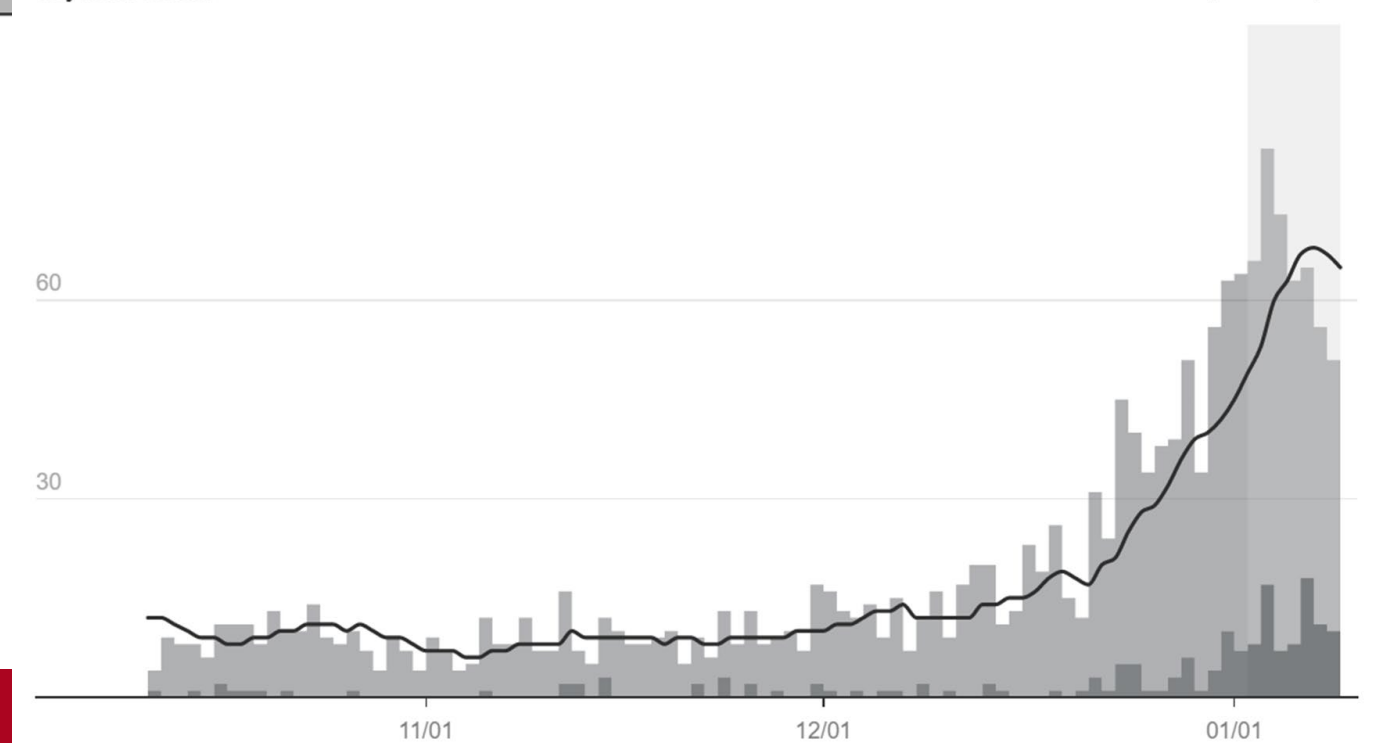


Cases Hospitalizations Deaths

By Borough

Citywide: deaths

Data from the most recent days are incomplete.



University COVID-19 Mitigation Updates

- University announced return to in-person instruction in January with enhanced mitigation
- See www.covid19.arizona.edu for current updates
- Updated [face coverings requirement](#) on all campus locations
- Strong recommendation for [COVID-19 test](#) before returning to campus and take weekly tests
- COVID-19 testing program [Cats TakeAway Testing](#) allows students, employees, and DCCs to pick up a PCR saline gargle test kit and drop off a sample at one of the [designated locations](#) in Tucson, Phoenix, Oro Valley, Sierra Vista and Yuma.
- [Campus Health](#) offers COVID-19 vaccines including first, second and booster doses of Pfizer and Moderna. If you're in Tucson, you can also receive your Pfizer, Moderna and Johnson & Johnson vaccine at [several locations](#) across Pima County.
- Strongly encourage employees to get vaccinated/boosted and [verify their vaccination status](#)

COVID-19 Mitigation Updates: Enhanced Mask Requirements

UA requires the use of surgical (3-layer disposable available in every building and classroom) or higher-grade (e.g., KN95, KF94) face masks be worn**



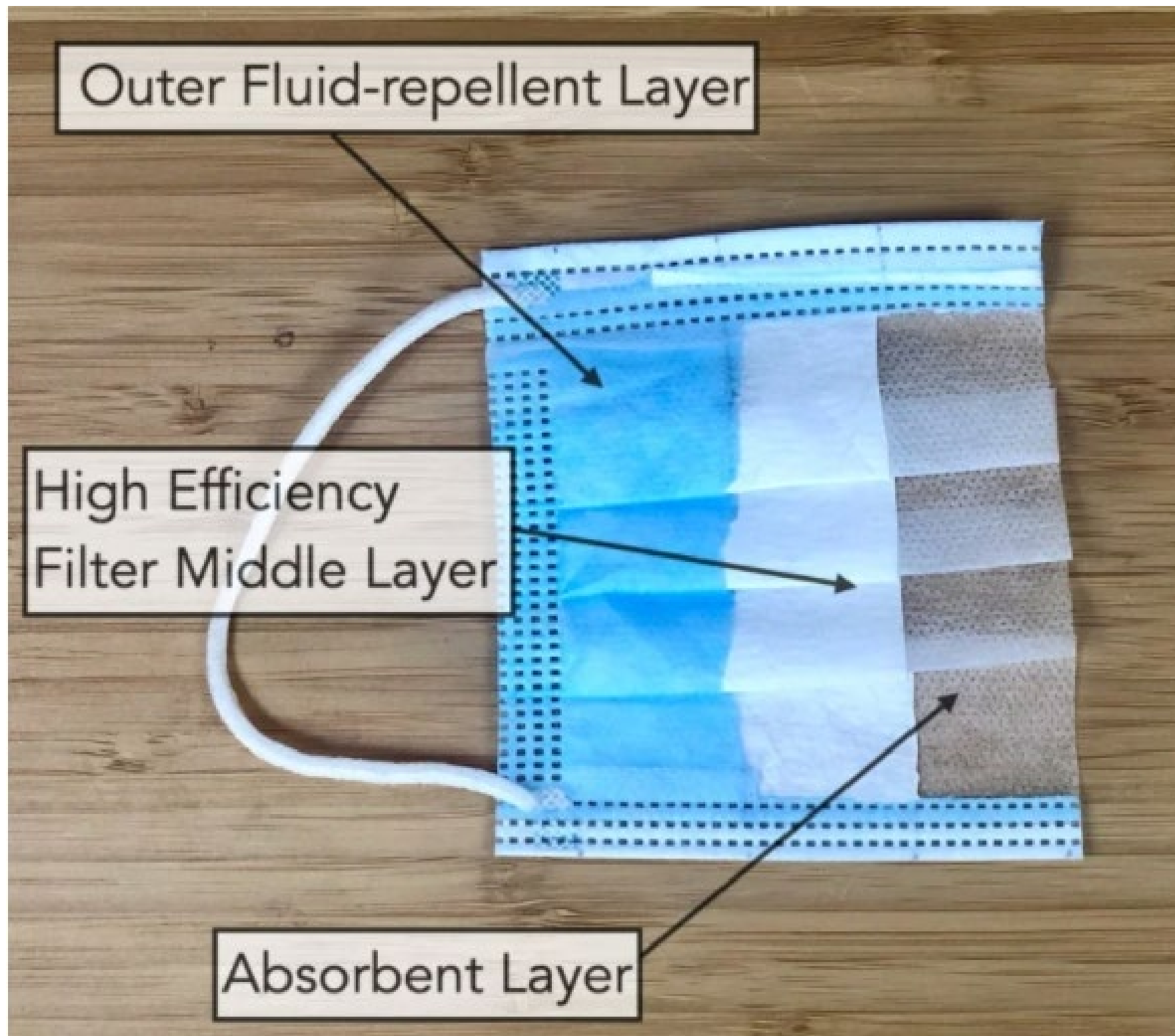
When to wear a surgical or higher-grade mask

- In all indoor spaces where it is not possible to adequately and continuously maintain social distance (*includes ALL classrooms, regardless of density at any one time*)
- In any building/facility that is operated by or affiliated with the University where patients or human research subjects participating in clinical research are seen in person
- In locations where personal protective equipment (including masks) has always been required to maintain safety protocols for situations with high hazards, such as areas where regulated chemicals are used or stored and other laboratory settings
- Inside a Cat Tran shuttle or any other public transportation provided by the University.

***Not allowed: cloth only, masks with exhalation valves**

***Applies to all faculty, staff, students, designated campus colleagues and visitors**

3-Layered Surgical Masks



Why surgical over cloth?

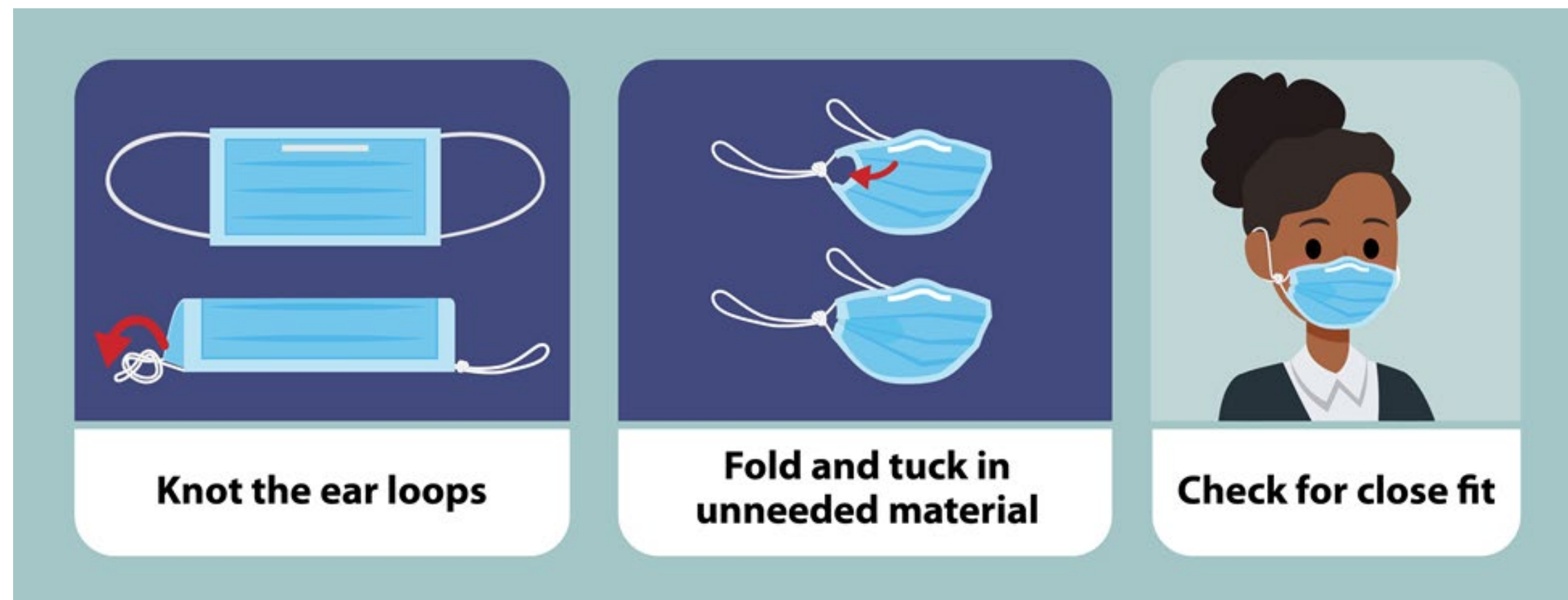
- Heterogeneity in material – including weave and layers – for cloth masks
- Filter in surgical masks traps respiratory droplets bidirectionally
- FDA authorization process for masks: <https://www.fda.gov/medical-devices/coronavirus-disease-2019-covid-19-emergency-use-authorizations-medical-devices/personal-protective-equipment-euas>
- Are light and relatively easy to breathe through
- Have a wire nose bridge to enhance fit
- Easy strategies to modify fit

Fit Matters – How to Enhance Mask Fit

Cloth masks *only* will no longer meet the UA mask requirement. Cloth masks (top layer) can be worn over a surgical mask (bottom layer) to improve fit

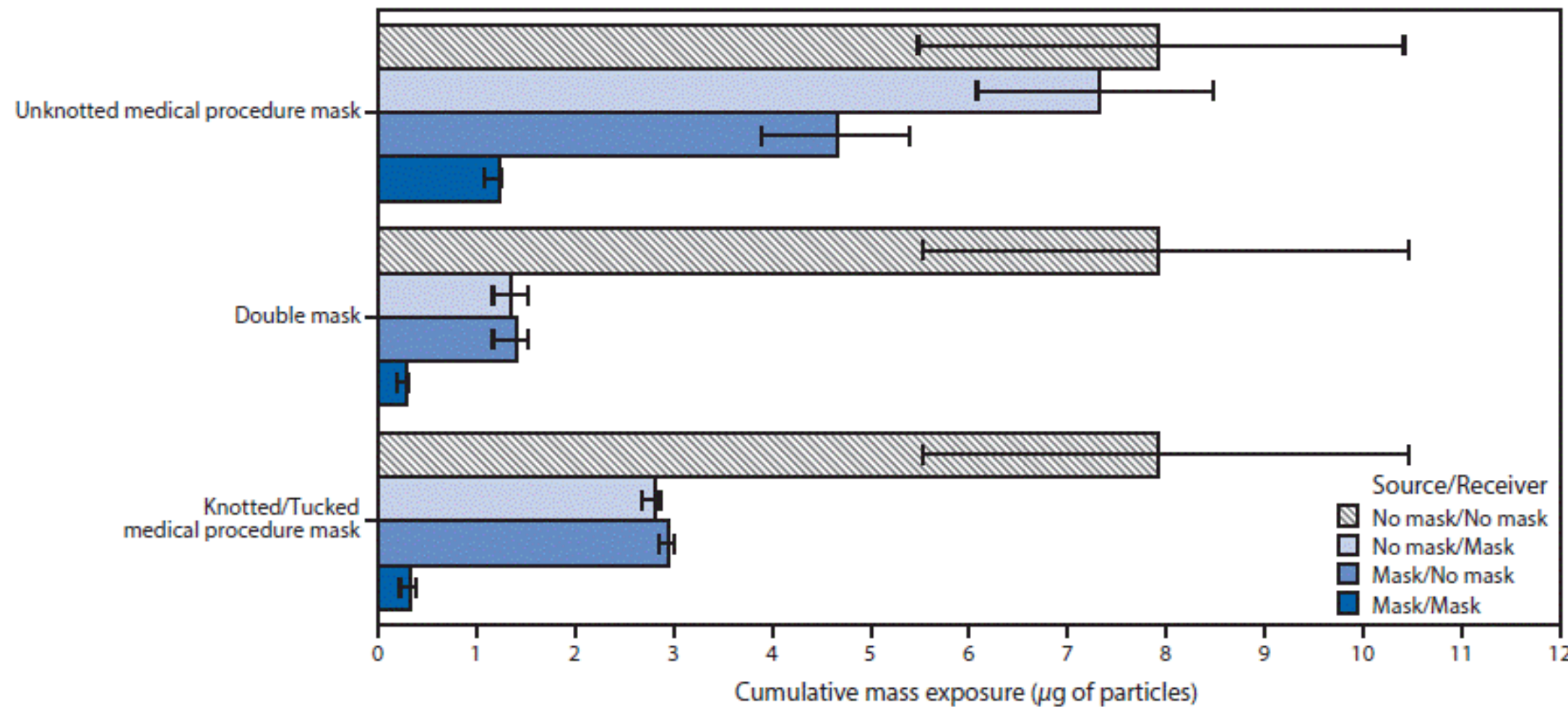
Improved fit increases protection:

- [CDC guidance on the use of masks](#)
- Video on knot-and-tuck: <https://www.youtube.com/watch?v=GzTAZDsNBe0>



Fit Matters

FIGURE 2. Mean cumulative exposure* for various combinations of no mask, double masks, and unknotted and knotted/tucked medical procedure masks†



In lab tests with dummies, exposure to potentially infectious aerosols decreased by **about 95%** when they both wore tightly fitted masks

Cloth mask over medical procedure mask

Medical procedure mask with knotted ear loops and tucked-in sides

CDC.GOV bit.ly/MMV

N95 Respirators

- N95s are considered respirators
- Close fit to face with head strap(s)
- Made dense network of meltblown fibers
- NIOSH Approved: inspects respirators, requires a fit test
- Approved N95s filter 95% of particles at 0.3μ
- Worn in healthcare/industrial settings to filter airborne particles
- Need fit test for specific N95 used



At University of Arizona

- N95/N99 masks are acceptable for those authorized to wear them by the University's Respiratory Protection Program.
- Use of an N95/N99 requires hazard assessment, medical clearance, training, and fit testing
- Voluntary use guided by Respiratory Protection Program



KN95 and KF94 masks

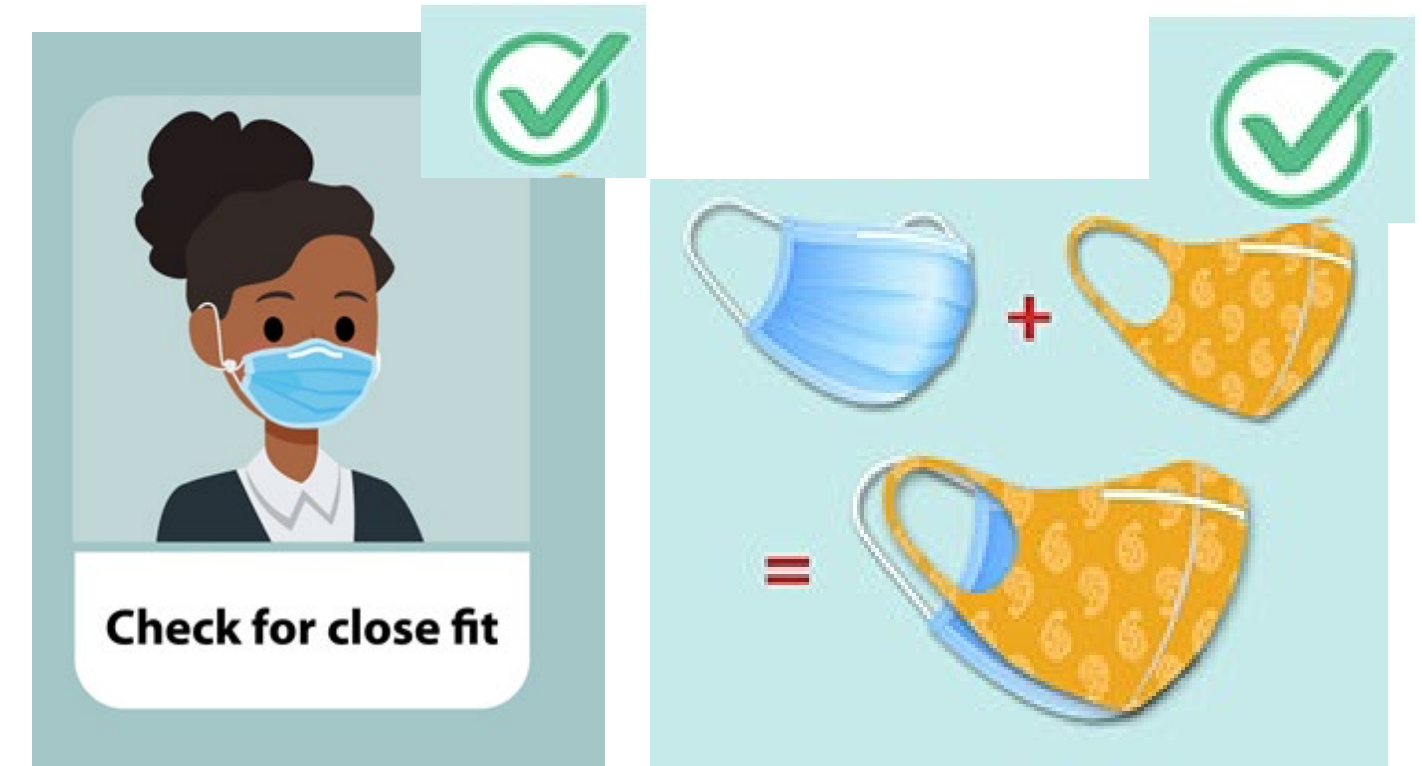
- Offer alternative to N95 masks
- Better fit and more layers than surgical mask alone
- Not NIOSH-approved but evaluated similarly to N95s (0.3 μ filtration)
 - KN95 – Chinese Government
 - KF94 – Korean Government
- Nose clips and ear loops
- FDA-cleared for emergency use in healthcare earlier in the pandemic when N95 shortage
- Non-profit: access and tracking reputable vendors: <https://www.projectn95.org/>
- ***Poorly fitting N95/KN95/KF94s are problematic***



Summary for Updated Mask Policy

DO: pay attention to material and fit

- Material: 3-ply surgical or higher-grade mask
- Fit: No gaps! Breath through (not around) mask!



DO NOT:

- Wear a loose-fitting mask of any kind
- Combine two disposable masks of any kind
- Combine KN95 or KF94 masks with other masks
- Wear a mask with an exhalation valve



COVID Mitigation: Specific Actions You can Take

- Follow [Face Covering Guidelines](#)
- Stay home if you are sick
- Remind students & staff of campus mask requirements
- Emphasize the layered (i.e., "Swiss cheese" approach): Mitigation strategies work in combination
 - Vaccination + Mask use indoors + Ventilation + Distancing + Disinfection + Hand hygiene
- All students and faculty are asked to [upload vaccination cards](#) to UA portal, which is linked to prizes
- Do not ask students & staff their vaccine status



IF YOU FEEL SICK

- **Stay home:** people who are mildly ill with COVID-19 are able to **self-quarantine at home** during their illness.
- Monitor your symptoms and seek emergency care immediately if your illness is worsening (e.g., difficulty breathing, inability to stay awake, bluish lips or face). If seeking medical care, call the doctor's office or emergency room ahead and tell them about your symptoms.
- **Campus Health** offers testing for COVID-19 – **please call (520) 621-9202 before you come in.**
 - Campus Health is testing individuals who are concerned that they are infected with or have been exposed to COVID-19.
 - Campus Health testing is only students, staff, and faculty of the University at this time.
 - Campus Health providers will evaluate patients and order testing if appropriate.
 - **Campus Health offers both PCR and Rapid Antigen Testing.**
 - **Antibody testing is available**
- **Find out more from the CDC: What To Do If You Are Sick**

Campus Health
Providing quality medical and mental health services through virtual and in-person care, COVID-19 health updates, testing, vaccination, and more.

CAMPUS HEALTH

SYMPTOMS

According to the CDC, people with COVID-19 have had a wide range of symptoms reported – ranging from mild symptoms to severe illness. Symptoms may appear **2-14 days after exposure to the virus**. People with these symptoms may have COVID-19:

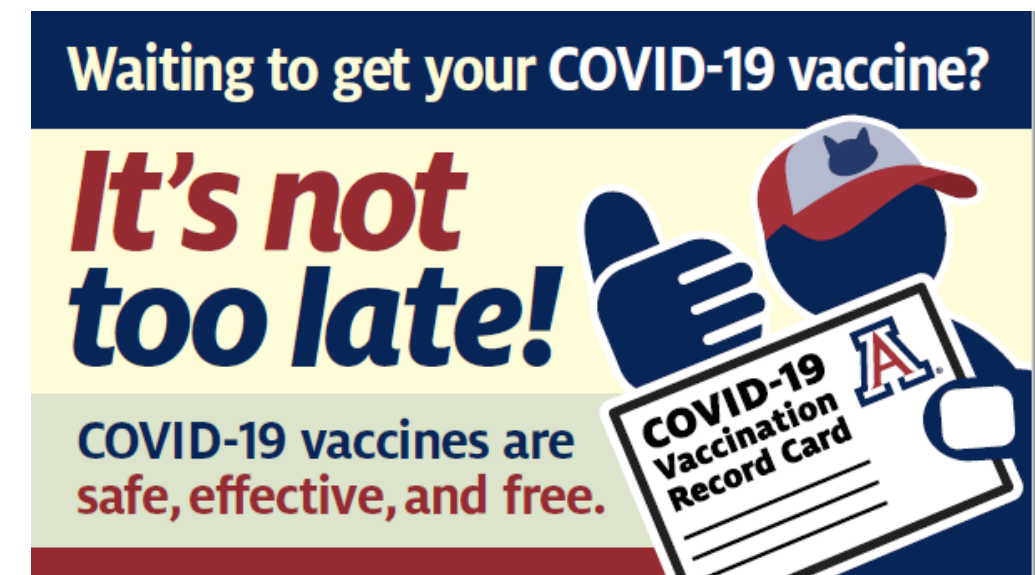
- | | | |
|---|------------------------------|----------------------------|
| • Fever or chills | • Muscle or body aches | • Congestion or runny nose |
| • Cough | • Headache | • Nausea or vomiting |
| • Shortness of breath or difficulty breathing | • New loss of taste or smell | • Diarrhea |
| • Fatigue | • Sore throat | |

This list does not include all possible symptoms. Check the **updated CDC list of symptoms** for more information.

PROTECT YOURSELF & OTHERS

COVID Mitigation: Specific Actions You can Take

- Speak to your building manager if you:
 - Find outdated signage
 - Need masks, disinfectant or hand sanitizer
- University Buildings – See the list of [building managers](#)
- Encourage all to answer calls from contact tracers
- Promote the use of the COVID Watch App
- Community norming: **"We are Wildcats and we look out for each other and those in our communities"**

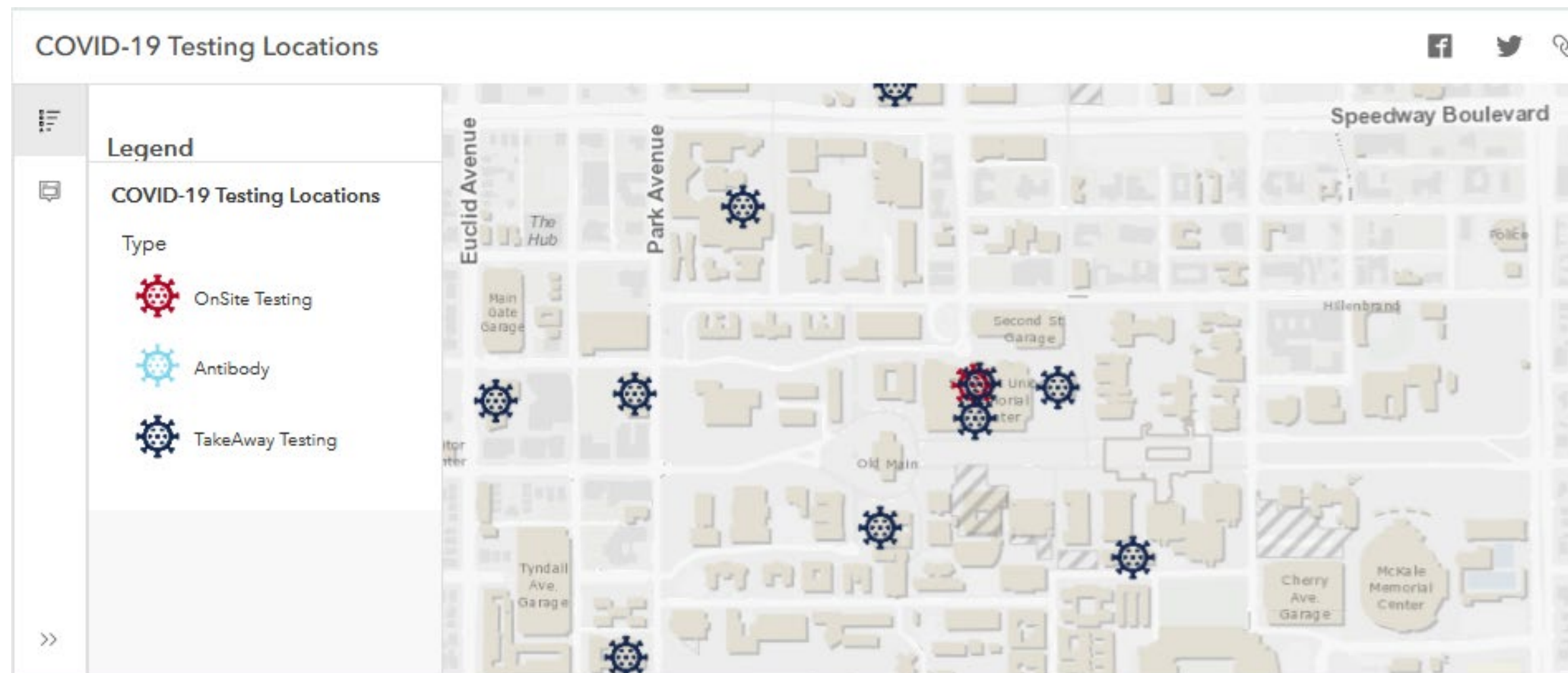


COVID Mitigation: Specific Actions You can Take

The University strongly encourages students and employees to test weekly.

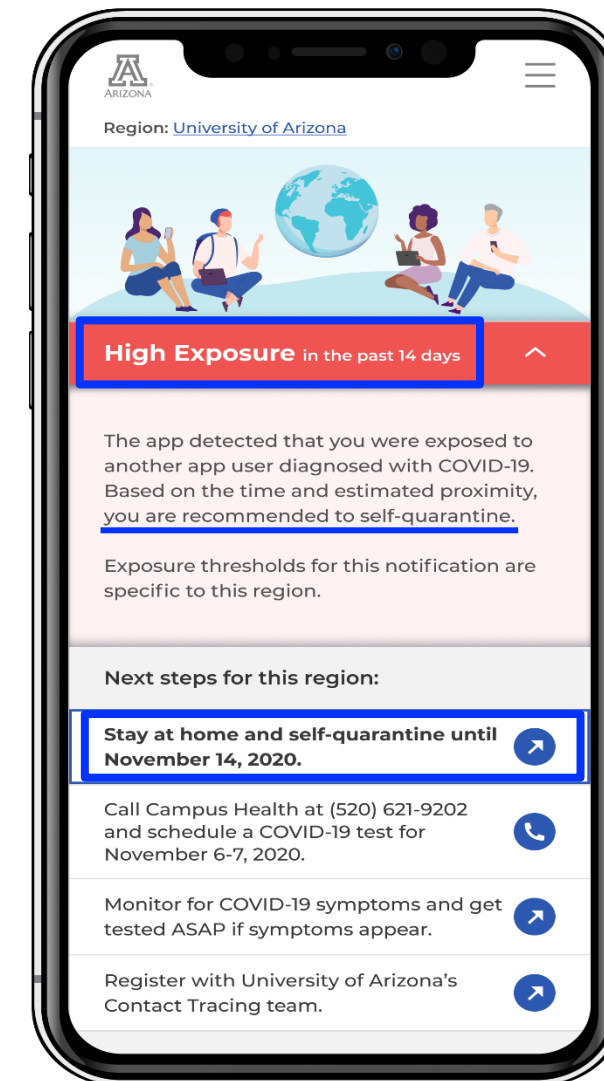
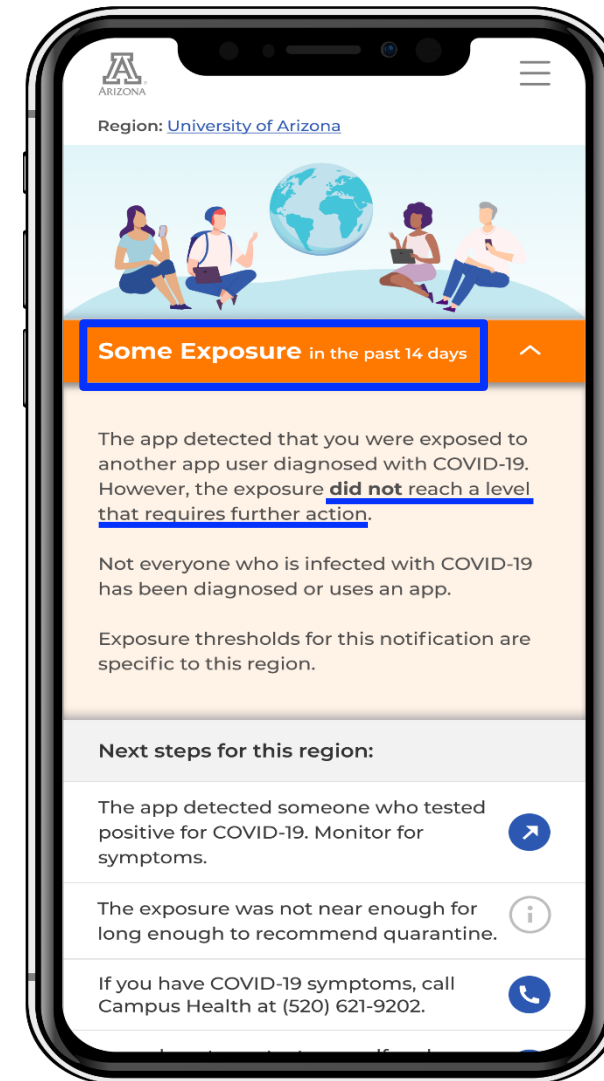
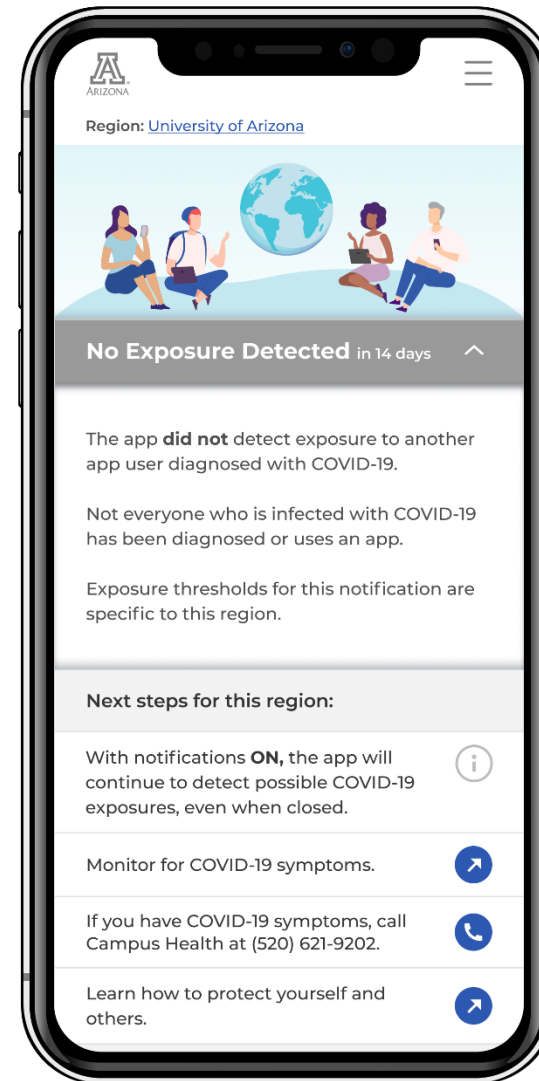
We offer two free and convenient testing options on campus:

- **TakeAway Testing (PCR)** – All locations are open, and no appointments are required.
- On-site PCR and rapid antigen testing are available at the Student Union Memorial Center. Visit the **COVID-19 Testing page** for more information, including specific locations and hours.



COVID WATCH

- **Download the app** from Google Play or the App Store and activate Bluetooth
- **Anonymously notifies close contacts** if you test positive.
- Alerts you if **you've been exposed.**



Positive Case Notification Protocols for Students

Required Instructor or Supervisor Actions

UArizona instructors or supervisor who know of a student who has recently tested positive for COVID-19 must:

- 1) Remind the student of their obligation to complete the [SAFER notification form](#) to initiate the contact tracing process.
- 2) Remind the student of their obligation to [Upload their positive test result](#) to the secure, HIPAA compliant Campus Health system, if their positive test was taken off campus.
- 3) Direct the student to follow the [CDC guidance](#) for isolation.
- 4) If you are an instructor teaching an IN-PERSON course in which the positive student is enrolled, complete the [Instructor Reporting Form](#) (IRF). Completing this form initiates the contact tracing process and allows instructors to get information and guidance from trained epidemiologists.
- 5) If you are a supervisor, refer to the [COVID-19 Workplace Positive Case Protocol](#)

Positive Case Notification Protocols for Employees

If you happen to test positive for COVID-19, please notify your supervisor, and [report to the SAFER team](#) to help the University conduct contact tracing. Then, please follow the [COVID-19 Workplace Positive Case Protocol](#), and work with your department head to discuss temporary adjustments to class modalities, or substitute instructor(s) if you are unwell / symptomatic, as needed. Our SAFER contact tracing team will conduct case investigations and alert us swiftly if they detect evidence of classroom transmission.

Q. A student in my class is refusing to wear an adequate mask/face covering. What should I do?

A: Ask the student to have a conversation outside the classroom and talk to the student in a firm, polite, and compassionate manner, apprising them of their obligation to comply with the face covering requirement in the classroom to protect the health of everyone. If the student refuses, you may inform them that failure to comply will result in students being asked to leave the classroom and / or other disciplinary actions, including possibly being dropped from this class. Please use the script prepared for *Do not allow students to be present in your classroom without a mask for any substantive period of time.*

Access the [Spring 2022 Classroom Management Resources](#) for sample instructor scripts for managing mask compliance.

Important: please file a “Face Covering Compliance” report to the [Dean of Students](#) about the incident, so that students across campus who are persistently creating challenges to the mask requirement can be quickly addressed.

Q. What should I do if I test positive for the COVID-19 virus?

A: If you test positive, please follow the [steps recommended by Campus Health](#) to self-isolate, seek treatment, and report to [SAFER](#). If you feel well but must isolate, discuss options to teach remotely or pre-record course lectures with your supervisor or program director. If you become ill and are unable to teach your class, as for any situation when an instructor is unable to perform their duties for a time, the department, in consultation with the instructor, will be responsible for determining how to handle the situation, including rescheduling or finding a temporary replacement.

Q. If a student is showing respiratory symptoms in class, can I ask them to go home?

A: No. Because most of the **symptoms of COVID-19** overlap with the symptoms of a great number of other conditions (including, for example, seasonal allergies), you should not attempt to make a diagnosis based on apparent symptoms. You may periodically remind students that they should stay home if they are ill. However, please remember also that most symptomatic individuals (e.g. 80% - 95%) who are tested for COVID-19 do not receive a positive result. ***Accordingly, no individual should be assumed to be infected with COVID-19 on the basis of apparent symptoms.***

Academic Instruction

- All classes are to operate in the modality published in the Schedule of Classes.
- Some temporary, rolling, adjustments to the instructional delivery modes for your academic programs in order to accommodate instructors, TAs or staff who have tested positive (with or without symptoms), or those who have a need to stay home to be with a young child or elder who needs care following a positive test.
- Individual faculty / instructors must work with Department Head/Chair/Director directly, to decide what **temporary** adjustments are appropriate in the event that instructors temporarily cannot teach in the normal modality due to illness or caregiving, just as they should for any other interruption to instruction (e.g., due to other illness, travel to conferences, etc.).
- Individual faculty / instructors must reach out to Department Head/Chair/Director immediately in the event of a change in circumstances that would necessitate any temporary adjustments in teaching modality. This is vitally important so that we have equitable outcomes for people across your department and across campus.
- Any adjustments to the planned instructional modality should be temporary, and map to the individual circumstances, while ensuring that our commitments to students are upheld to the best extent possible.
- Please ensure that Department Head/Chair/Director are involved in the communications to the impacted students, to ensure that we have as much uniformity as possible in the messages from your department.
- Decisions about significant and permanent changes in the schedule of classes must be approved by the Provost.
- Please contact department head to discuss any concerns. Departments and employees can contact the following units for support, if needed:
 - DRC to explore requests for health / disability -related accommodations.
 - HR to discuss concerns about caretaking.

Academic Instruction

- Academic Instruction Resources are regularly updated online:
<https://provost.arizona.edu/content/academic-instruction-resources>
- Instructors may provide office hours either in-person and/or remotely.
- International Student Services has provided updates on [Spring 2022 Immigration Guidance](#).

Central Classroom Updates

- Classroom density will continue to be *mostly* pre-pandemic levels for Spring 2022, with some modifications.
- Updated classroom layouts and pictures online - see: <https://ctsrooms.arizona.edu>



Central Classroom Support



Call 520 621 3852 which is a one-stop helpline for reporting *any* central classroom problem or issue:

- ✓ Masks
- ✓ Computer or tech issues
- ✓ Schedule a technology walk-through in the classroom
- ✓ Furniture, AC, custodial problems, etc.

Q: If the infection rate increases in our community, may I decide to transition my class to remote teaching?

A: No. Any university-wide decisions about changes in teaching operations will be made by University leadership in consultation with public-health authorities. Academic unit leaders are responsible for teaching courses in the modality indicated to students in the published Schedule of Classes.

Q: Would I be allowed to move my classes outside, provided that the class content was delivered in a way to make this reasonable?

A: No. Although moving outside might work well for some students, it is likely to adversely impact others. It is important to consider the impact of classroom technology, accessibility, and temperature extremes of outdoor locations, especially for those with accessibility concerns.

Disability Resource Center (DRC)

DRC staff are available to collaborate and facilitate access in class and work settings for both students and employees.

Work Related Requests:

- We strongly encourage employees to first discuss potential temporary or modified work arrangements with their manager/supervisor. Employees may connect with the DRC to explore requests for disability accommodations at workplaceaccess@arizona.edu or 520-626-9559.

Academic-Related Requests:

- Students not yet affiliated with DRC can get connected at <https://drc.arizona.edu>
- DRC-Testing is open with a reduced capacity for proctoring in-person exams when accommodations cannot be provided by the instructor.

Contact us at drc-info@arizona.edu

Q: I have a teaching disability or medical condition; how can I request adjustments to my in-person teaching responsibilities?

A: We are delivering the majority of classes in-person to provide students with rich learning environments, research opportunities, and a sense of community and connection. We recognize that some individuals may have health-related conditions that may require workplace adjustments due to the pandemic. We strongly encourage employees to first discuss potential temporary modified work arrangements with their manager/supervisors. If needed, employees may connect with the Disability Resource Center (DRC) to explore requests for accommodations at workplaceaccess@arizona.edu or 520-626-9559.

Q: A student not wearing a mask or face covering says that they have a disability or medical condition. What should I do to accommodate them?

A: If students are concerned about wearing a face covering on the basis of their disability or medical condition, please ask them to consider the use of a clear mask or another option that offers a different design and promotes effective ease of use. View [face coverings and accessibility considerations](#) for more information.

Please ask the student to contact the DRC at DRC-info@arizona.edu or call 520-621-3268 to discuss a potential accommodation.

Q: Some students are asking for modifications based on their health situations. Are we expected to provide a hybrid format?

A: You are not required to provide a hybrid format. Students who need to attend remotely for more than a short period should register for courses scheduled in an online format. Students with health-related issues should be directed to work with DRC (<https://drc.arizona.edu>)

Research Updates

- Remain in modified Phase 5 <https://research.arizona.edu>
- Face coverings / masks continue to be required:
 - ✓ Where designated by signage / required by institutional COVID-19 policies.
 - ✓ Any building/facility that is operated by or affiliated with the University where patients or human research subjects participating in clinical research are seen in person.
 - ✓ In locations where personal protective equipment (including masks) has always been required to maintain safety protocols for situations with high hazards, such as areas where regulated chemicals are used or stored and other laboratory settings.
- UAccess Research System Upgrade:
 - ✓ UAR unavailable for proposal routing from 5pm Jan 14 through 8am Jan 26, 2022.
 - ✓ <https://research.arizona.edu/administration/home/kuali-research-upgrade> for information on proposal submission during the outage and software update details

Instructor FAQ

<https://covid19.arizona.edu/instructor-faq>

Recording and Slides

<https://provost.arizona.edu/content/pac>

**3 SIMPLE
STEPS TO
KEEP EACH
OTHER SAFE**

BEAR DOWN and...

1 MASK UP

2 VAX UP

3 GET TESTED



Thank you!

QUESTIONS &
DISCUSSION