

# Connect to Work PC from Home PC

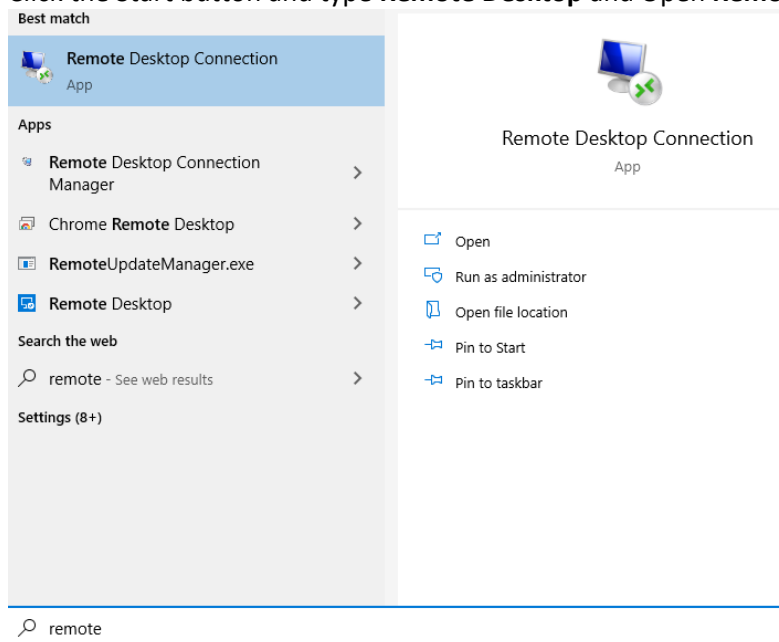
## Prerequisites:

- Work computer name (see **Get Machine name of Windows 10 computer.pdf**)
- Work computer enabled for Remote Desktop access (see **Enable RDP.pdf**)
- Windows 10, Windows 8.1, Windows 8
  - If you have Windows 7, please upgrade to Windows 10 as soon as you're able
- Active Internet Connection at home
  - Please note, if you use your mobile phone for tethering/Wi-Fi, you may incur charges from your provider.

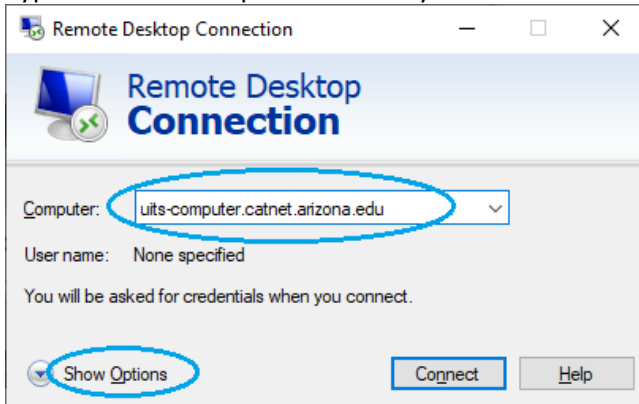
## Steps:

(if you already have Cisco AnyConnect installed at home, skip to step 2)

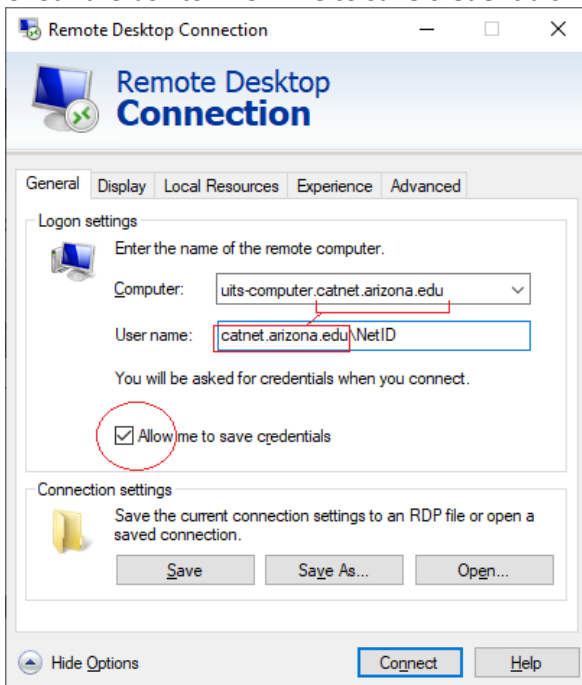
1. Follow the steps on this site to download and install the Cisco AnyConnect VPN client:  
<https://it.arizona.edu/documentation/ua-vpn-download-and-installation-instructions-windows>
2. Connect to the VPN by following the steps by the method you choose:
  - a. Push / Duo Mobile:  
<https://it.arizona.edu/documentation/connect-ua-vpn-using-duo-mobile-app>
  - b. Phone call:  
<https://it.arizona.edu/documentation/connect-ua-vpn-using-phone-call>
  - c. Text Messaging:  
<https://it.arizona.edu/documentation/connect-ua-vpn-using-text-messaging>
3. Click the Start button and type **Remote Desktop** and Open **Remote Desktop Connection**



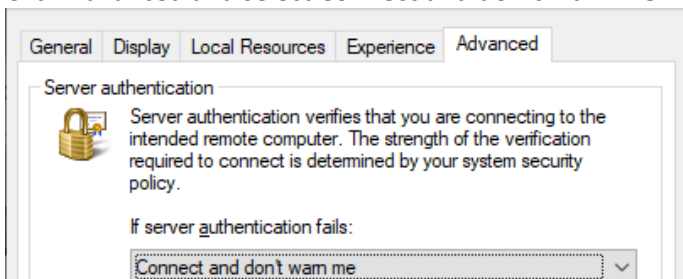
4. Type in the full computer name of your work PC and then click Show Options



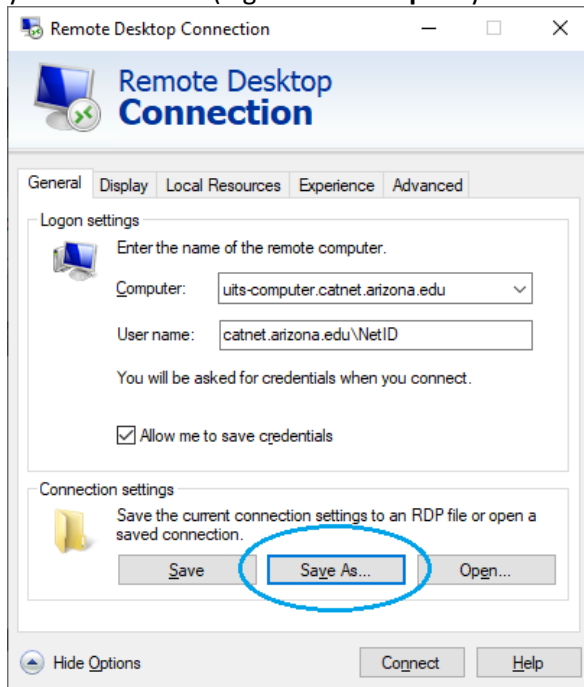
5. For **User name**, type everything after the first period in your computer name followed by a \ e.g. catnet.arizona.edu\ or wns.ccit.arizona.edu\  
6. After the \ type in your NetID e.g. \wilburwildcat or \wilmawildcat  
7. Check the box to **Allow me to save credentials**



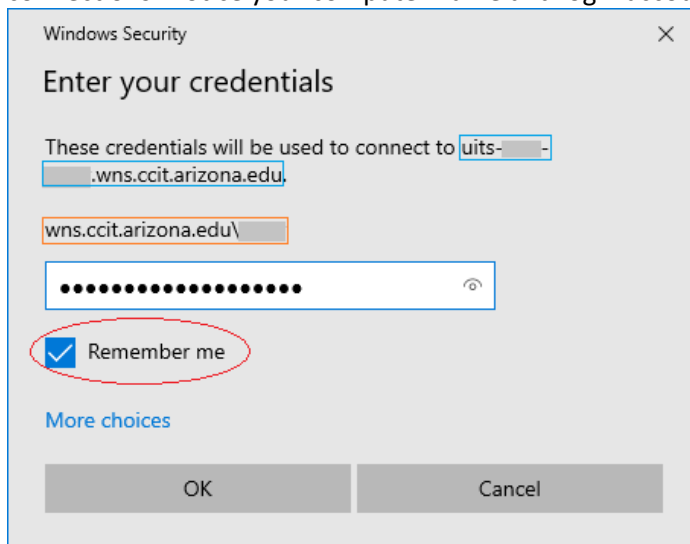
8. Click Advanced and select **Connect and don't warn me** from the drop-down



- Click **General** once again, and this time click **Save As**, and then name and save the file where you'll remember (e.g. **Work PC.rdp** on your **Desktop**)



- Click **Connect**. The first time you connect you'll be prompted to enter your **work PC** password. Be sure to also check the box **Remember me** and click **OK** so it will save for your future connections. Notice your computer name and login account are displayed as well.



- Once connected, you'll see your work machine presented. If you receive any error messages at this point, please take a screenshot or snap a picture and contact your IT Support for further assistance.
- When you are done with the remote session, click the X at the top of the blue connection bar and then disconnect or quit the AnyConnect VPN client.