

# Connect to Work PC from Home Mac

## Prerequisites:

- Work computer name (see **Get Machine name of Windows 10 computer.pdf**)
- Work computer enabled for Remote Desktop access (see **Enable RDP.pdf**)
- Microsoft Remote Desktop 10 app from the App Store  
<https://apps.apple.com/us/app/microsoft-remote-desktop-10/id1295203466?mt=12>
- Mac High Sierra, Mojave or Catalina
  - If you have older versions of the Mac OS, please upgrade as soon as you're able
- Active Internet Connection at home
  - Please note, if you use your mobile phone for tethering/Wi-Fi, you may incur charges from your provider.

## Steps:

(if you already have Cisco AnyConnect installed at home, skip to step 2)

1. Follow the steps on this site to download and install the Cisco AnyConnect VPN client:  
<https://it.arizona.edu/documentation/ua-vpn-download-and-installation-instructions-macs>
2. Connect to the VPN by following the steps by the method you choose:
  - a. Push / Duo Mobile:  
<https://it.arizona.edu/documentation/connect-ua-vpn-using-duo-mobile-app>
  - b. Phone call:  
<https://it.arizona.edu/documentation/connect-ua-vpn-using-phone-call>
  - c. Text Messaging:  
<https://it.arizona.edu/documentation/connect-ua-vpn-using-text-messaging>
3. Open the Microsoft Remote Desktop 10 app and click **Add PC**
4. Fill in the full PC name, choose a friendly name (e.g. Work PC) and leave all the other defaults

**Add PC**

PC name:

User account:

**General** | Display | Devices & Audio | Folders

Friendly name:

Group:

Gateway:

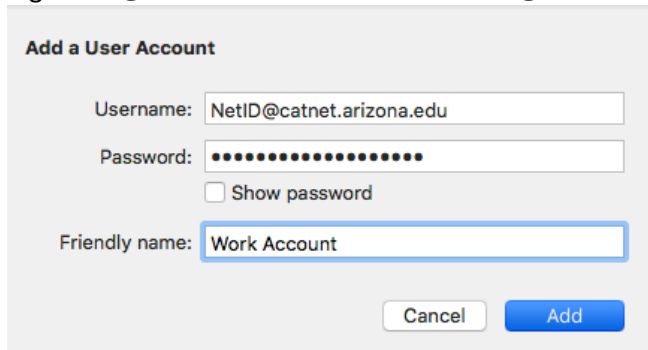
Bypass for local addresses

Reconnect if the connection is dropped

Connect to an admin session

Swap mouse buttons

5. Click the drop-down next to user account and select Add user account...
6. Fill in your full username, **work PC** password, give it a Friendly name and click **Add**  
e.g. netid@catnet.arizona.edu or netid@wns.ccit.arizona.edu



**Add a User Account**

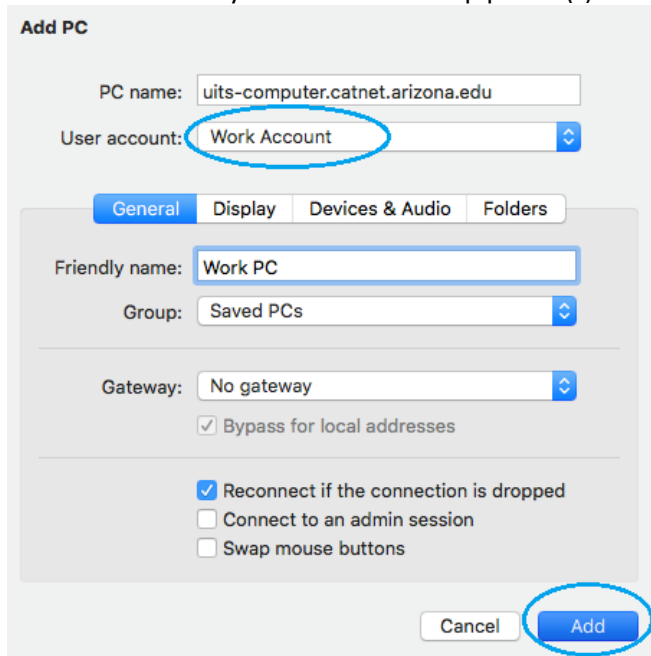
Username:

Password:

Show password

Friendly name:

7. After you do this, note the User account is now your new saved account name, and then click **Add** to add this to your remote desktop profile(s).



**Add PC**

PC name:

User account:

**General** | Display | Devices & Audio | Folders

Friendly name:

Group:

Gateway:

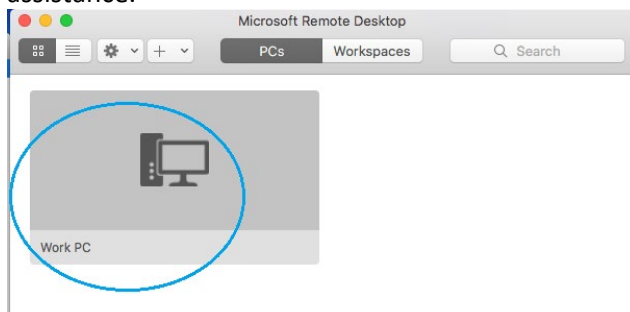
Bypass for local addresses

Reconnect if the connection is dropped

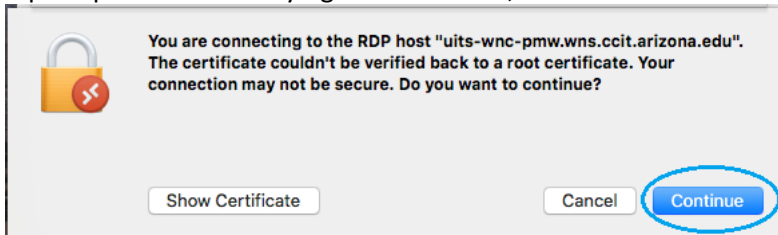
Connect to an admin session

Swap mouse buttons

8. Double-click the Remote computer you just added to connect. If you receive any error messages at this point, please take a screenshot or snap a picture and contact your IT Support for further assistance.



9. If prompted about verifying the certificate, click **Continue**



10. When you are done with the remote session, click the red circle at the top left of the screen, quit Microsoft Remote Desktop and then disconnect or quit the AnyConnect VPN client.

