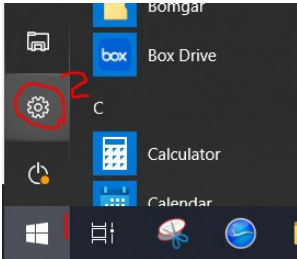


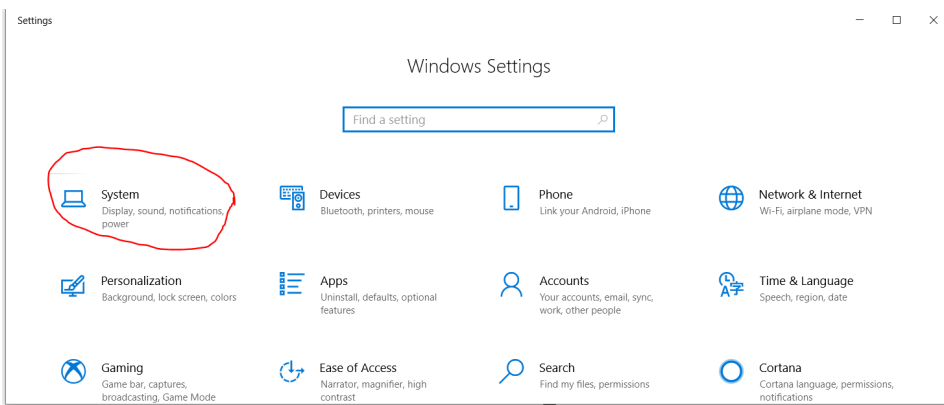
# Set Computer Not to Sleep

There are quite a few steps to make sure that sleep and hibernation are turned off so that your computer will be able to stay connected to the internet to allow you to remote connect. Some of these settings may have already been set on your system but go ahead and check them all.

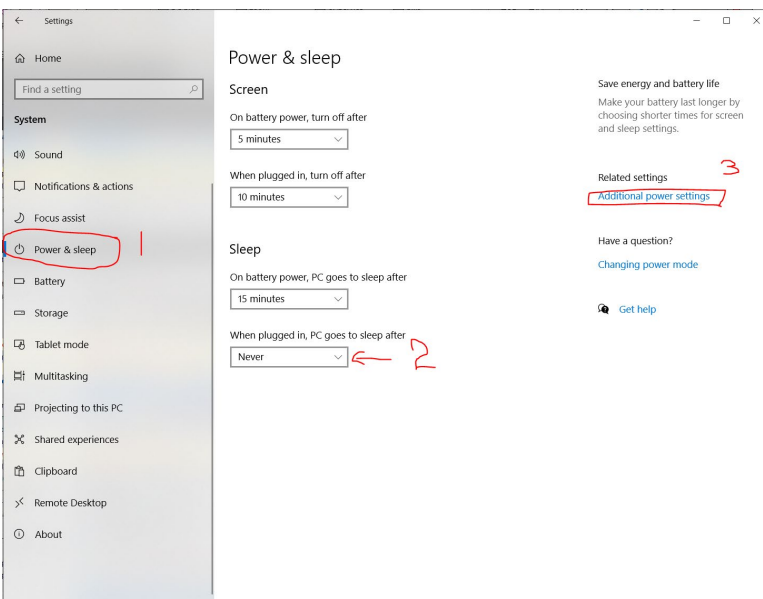
Press **Windows key + I** to open Settings or Click on the start button then the gear icon.



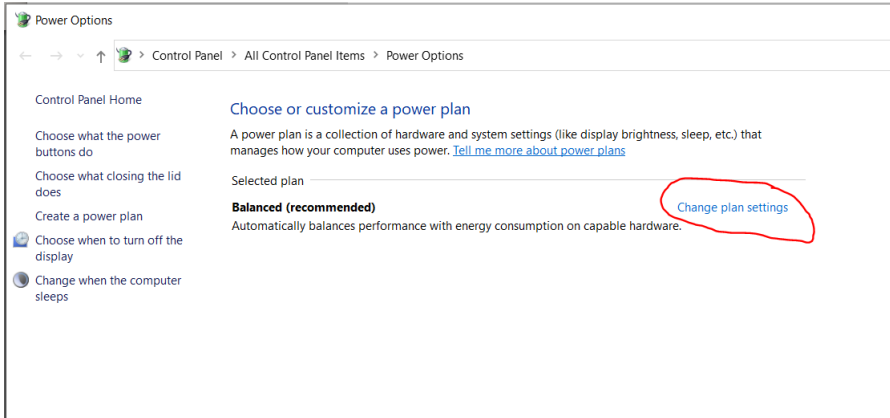
Click **System**



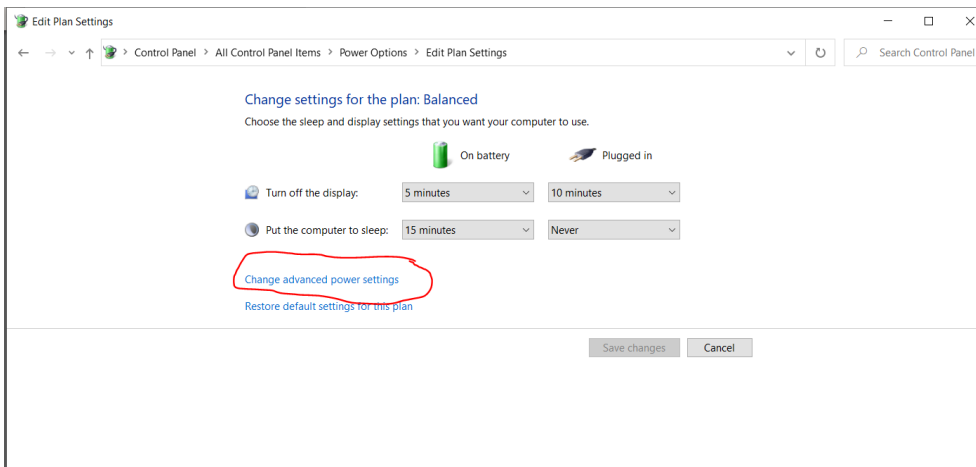
Click on **Power and Sleep**. Then choose **Never**. After that click on **Additional Power Settings**



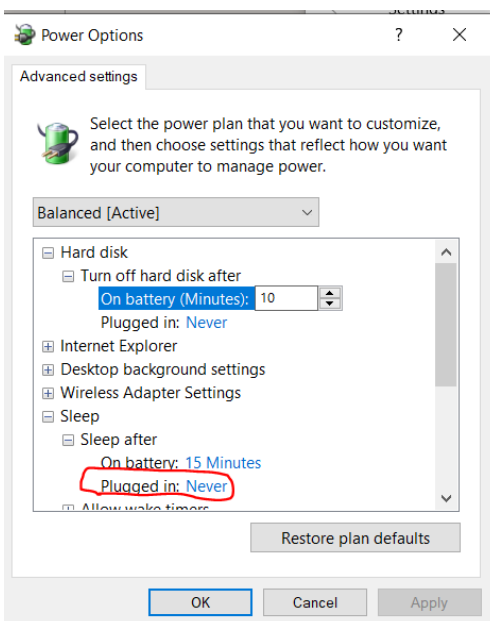
The next steps are to remove hibernation options. The selected plan may vary but which ever one is selected click on Change Plan Settings



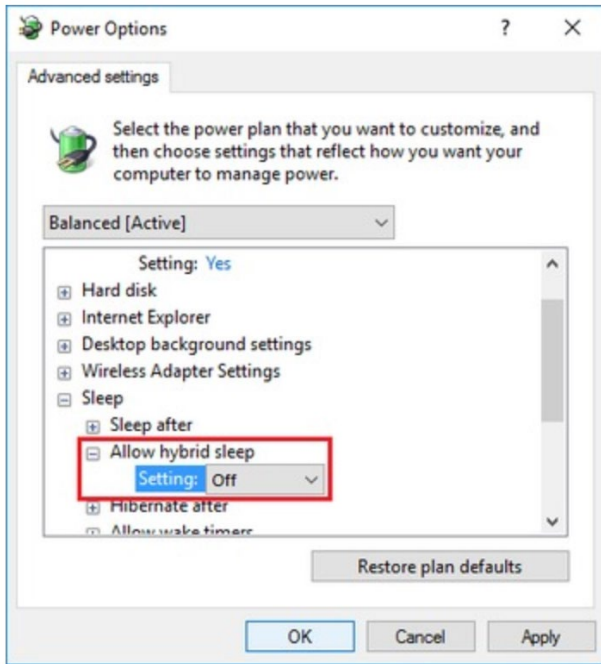
Now Choose Change advanced power settings



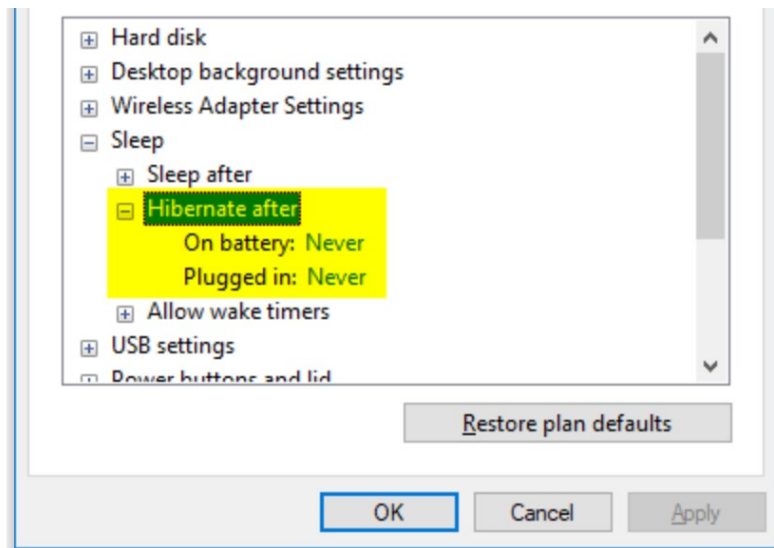
Expand the sleep options and confirm sleep is set to Never



Expand Hybrid sleep and set to OFF



Expand Hibernate After – set to Never (may have to set to 0 minutes which = Never)



To make sure the network card itself does not sleep then Expand the PCI Express – Link State and set it to OFF

