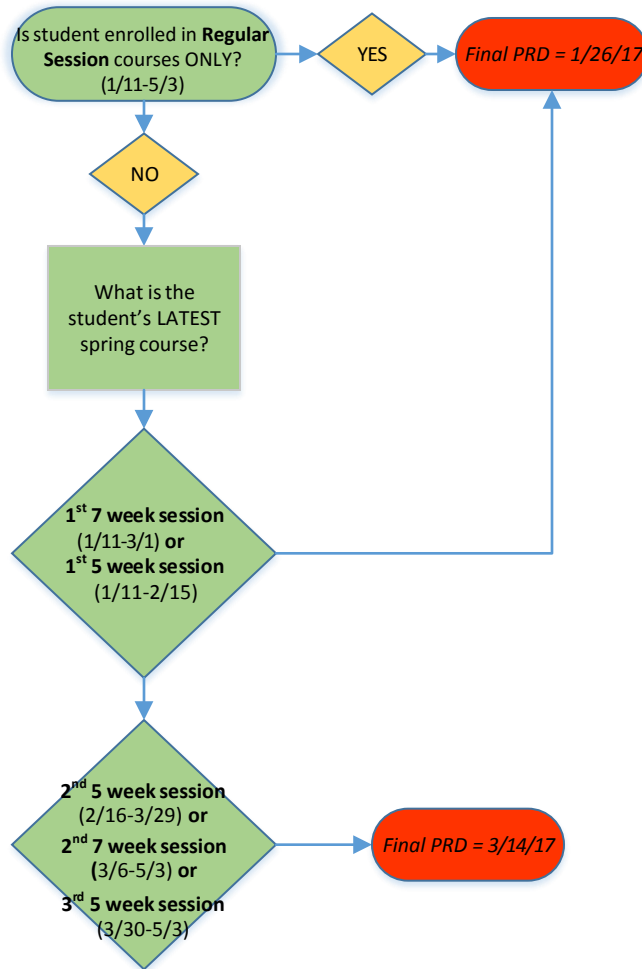


RECALCULATION DATES QUICK GUIDE

Spring 2017



Spring PRDs: 1/3, 1/26, 3/14

What is PRD?

Pell Recalculation Date

This is the date(s) in which the student's record will be reviewed for any enrollment changes.

Enrollment changes may cause aid to be increased or reduced. This includes Pell and Ugrant that has already disbursed.

What is Final PRD?

The last time a student's aid will be reviewed for enrollment based aid changes.

Example: If a student's final PRD = 1/26/17, he will be reviewed for aid changes for the last time on 1/26/17. After that date, no further adjustments will be made.

Can these dates be shared with the student?

These dates may change but you may refer to them with the student using "week of..." language.

What students are impacted by repackaging?

UGRD students who are Pell, Ugrant and/or TEACH eligible with enrollment changes. Loan only UGRDs are not impacted nor are Graduates or Professional students.

*While OSFA will lock in the student's enrollment on the Final PRD's listed here, students will not see their adjusted financial aid on these dates. Awards will be finalized and visible to students the week of these dates.

*Students with questions regarding the Aid Recalculation Dates policy should be directed to OSFA.