

PLS 354

# Sustainable Horticulture

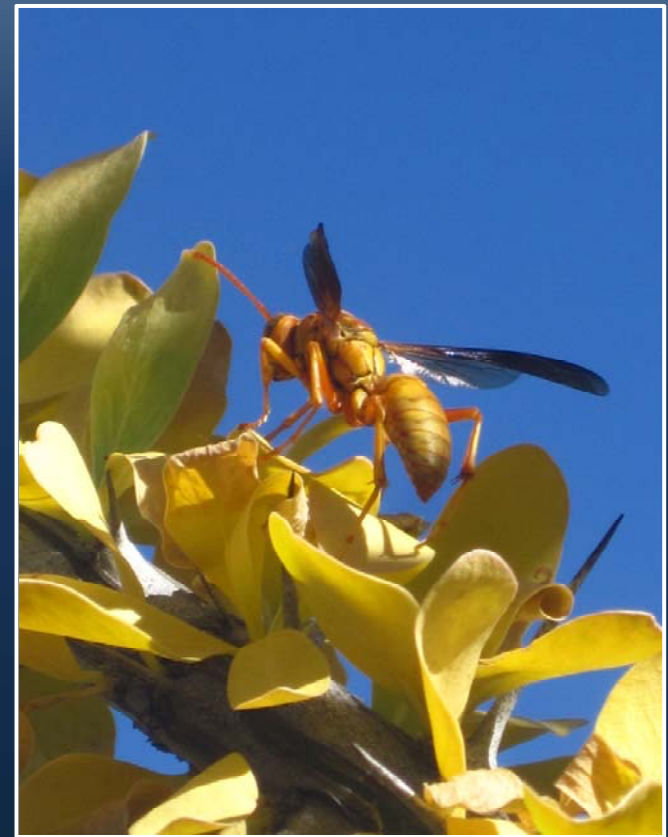
Dr. Tanya M. Quist

Spring Even Years



Lecture:  
M/W 10-10:50am  
Lab: W 2-4:50pm

Learn principles guiding plant selection, design and landscape management practices that improve the performance of ornamental and crop plants in urban situations.



<http://cals.arizona.edu/spls>